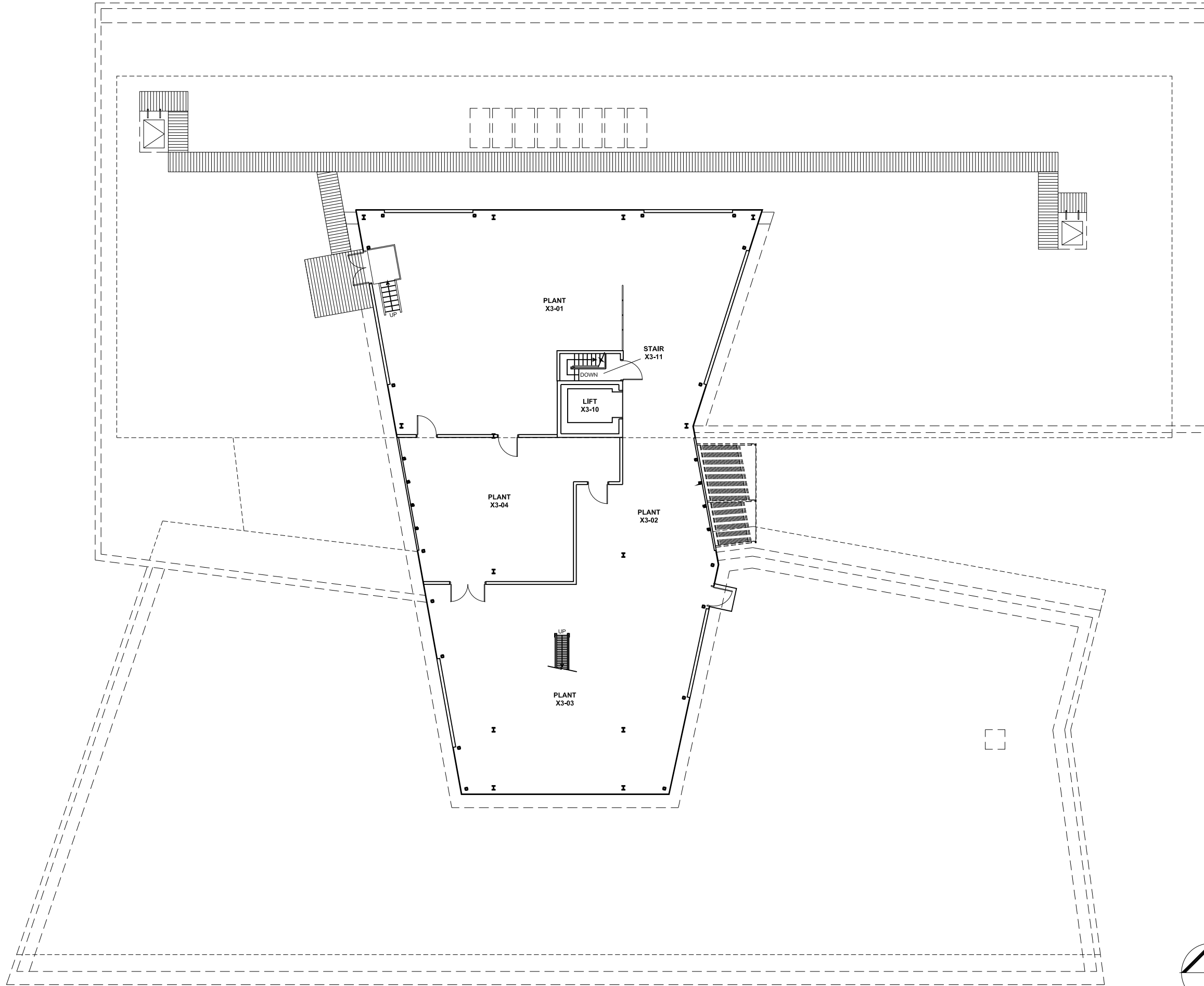


2 4 6 8 10m 20 40 60

**NOTES:**  
 Building Records drawings remain the property of the University of South Australia and must be returned upon request.  
 These drawings may be inaccurate, and are subject to change without notice. Any errors and/or omissions should be reported to the Facilities Management Unit.



**UNIVERSITY OF  
SOUTH AUSTRALIA**

**FACILITIES  
MANAGEMENT  
UNIT** Level 2,  
101 Currie Street,  
Adelaide, SA 5000  
Phone 8302 2762  
Fax 8302 2708

**BUILDING RECORDS  
MAWSON LAKES CAMPUS**

Building  
**ENVIRONMENTAL SCIENCE  
LEVEL 03 (PLANT ROOM)**

Scale: Refer to scale bar Drawn: J Hvalica  
 Last Update: 01/12/2009

Drawing No.: **A555PL03 - W** Revision: **C**

