



**University of South Australia**  
**Information Strategy and Technology Services**

## **Getting connected to eduroam**

**Intel PROSet**

Version: 1.3

Prepared by: J. Marshallsay, J. Sayers  
December 2009

---

Introduction .....	2
Configuring your eduroam connection .....	3
Connecting to the Internet (Students) .....	5

## Introduction

[<to contents](#)

This guide describes how to configure the Intel PROSet chipset/software found in a number of laptops to enable users to connect University of South Australia's network from other eduroam members.

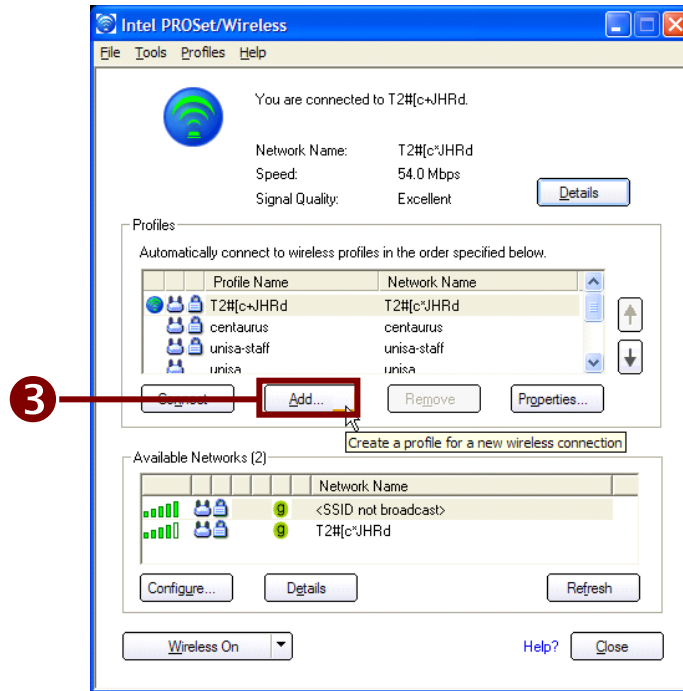
### **IMPORTANT - READ THIS BEFORE CONTINUING!**

<b>Prerequisites/ Assumptions</b>	In order to proceed with the set up detailed in this guide you will need a valid account at the University of South Australia.
<b>Hardware requirements</b>	You will need to have a notebook computer using the Intel 2200BG or 2915ABG wireless network cards.
<b>Software requirements</b>	Intel PROSet/Wireless software.

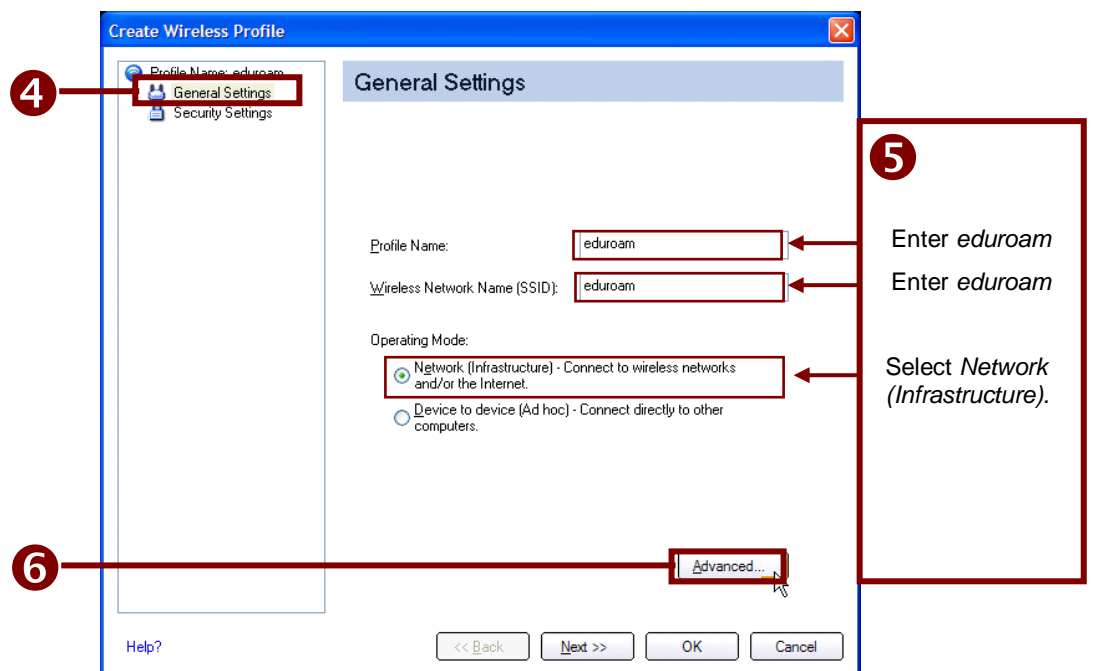
## Configuring your eduroam connection

[<to contents](#)

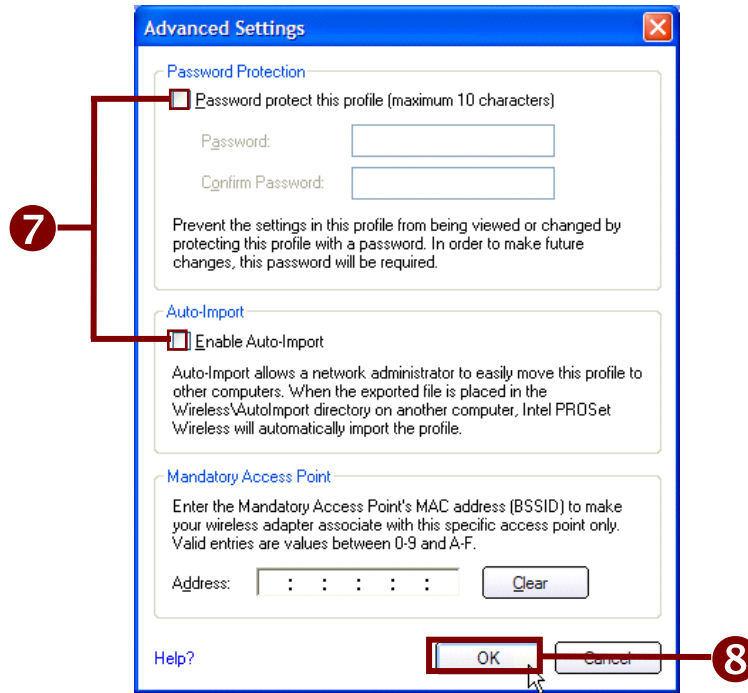
1. Select the connections window from the *Start* menu.  
Start Menu → Connect to → Show all connections
2. Open the Intel PROSet software.
3. Click the *Add* button; the Create Wireless Profile dialog is displayed.



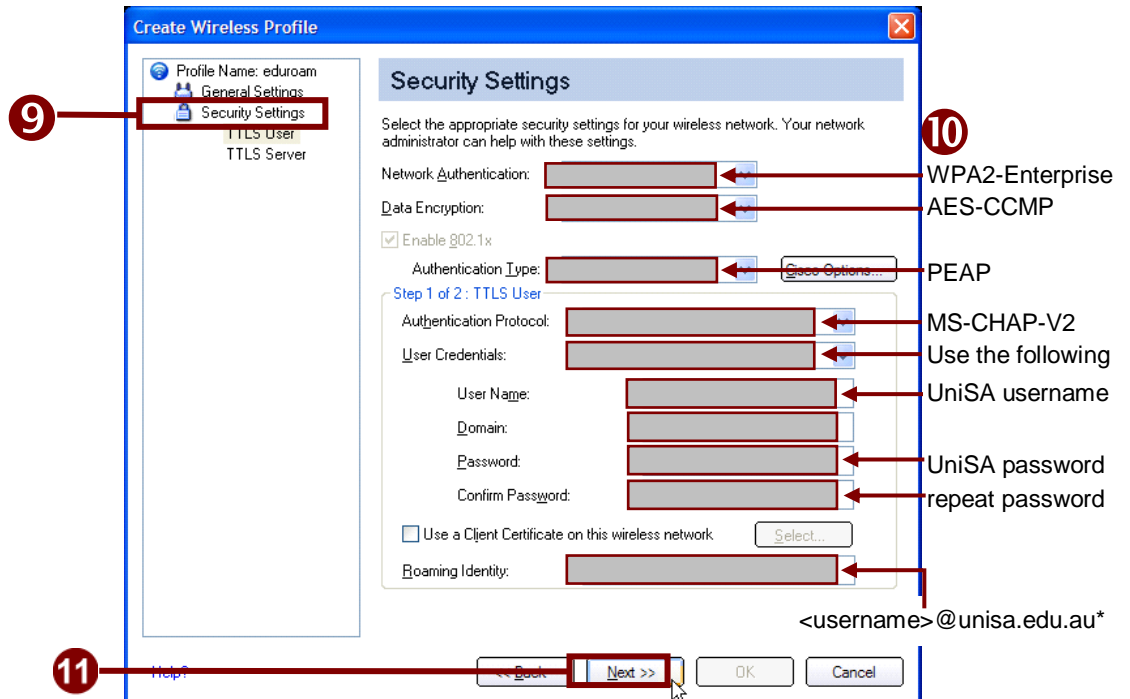
4. Ensure that *General Settings* is active.
5. Enter the required information.
6. Click on the *Advanced ...* button.



7. Ensure that all options in the *Advanced Settings* are de-selected.
8. Click on *OK*.



9. Select *Security Settings* from the sidebar.
10. Enter the required information in the dialog box.
11. Click the *Next* button.



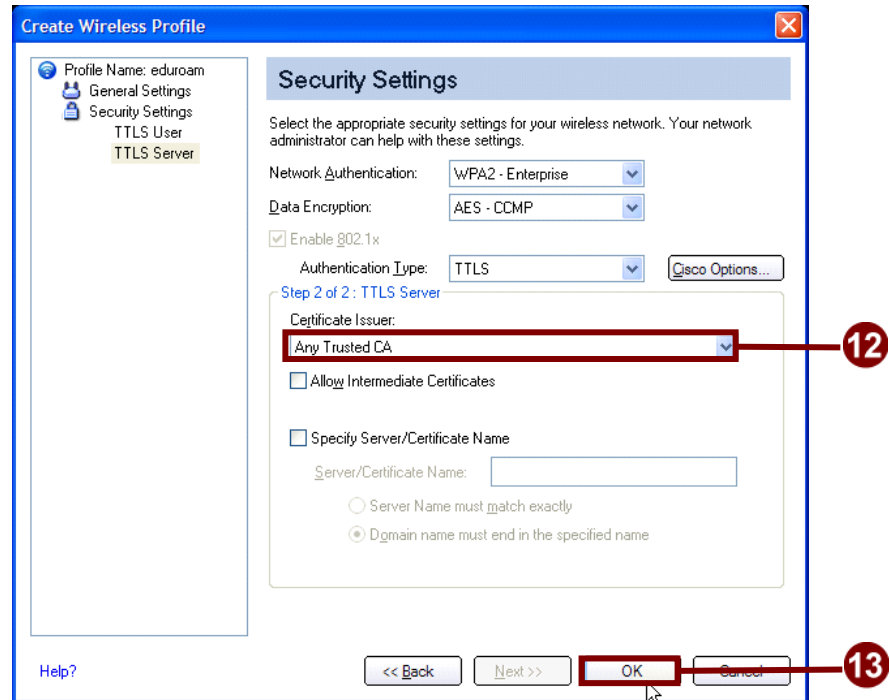
\* username is in the form *bloggsja@unisa.edu.au*, not your email address.

**Note:** WPA is the minimum authentication level supported by Eduroam, some Universities including UniSA support WPA2,

which provides a higher level of security. You will need to check whether the University you are connecting from supports WPA2.

If you are using WPA2, set the *Network Authentication* to ‘WPA2-Enterprise’, and the *Data Encryption* to ‘AES-CCMP’

12. Ensure that *Certificate Issuer*: is set to ‘Any Trusted CA’.
13. Click on *OK*, and close any other open windows: you are now ready to connect to the wireless network:



## Connecting to the Internet (Students)

[<to contents](#)

When you attempt to connect to the Internet you may be prompted to connect to the University’s proxy server: enter your UniSA *username* and *password*.

If after entering this information and pressing *OK* your login fails, re-enter the information, but prefix your *username* with UNINET - e.g. uninet\bloggs001.

