



## **Getting connected to *eduroam* using 802.1x**

**Windows Vista™ (all versions)**

*Version: 1.5*

*December 2009*

---

Introduction .....	<b>2</b>
Setting up your wireless connection .....	<b>3</b>
Connecting to the wireless network .....	<b>7</b>
Setting up Internet Explorer 7 (all versions of Vista) .....	<b>10</b>
Setting up Firefox 2.0 (all versions of Vista) .....	<b>12</b>
Setting up printers .....	<b>13</b>
Connecting to the Internet (Students) .....	<b>15</b>

## Introduction

[<to contents](#)

This guide describes how to set up Windows Vista™ to connect the University's wireless network using 802.1x.

802.1x is an access-control method that:

1. restricts access to the network to authorised users only (staff and student);
2. provides encrypted access between the client PC and the wireless access point using WPA or WPA2 encryption.

This service provides you with access to the University's shared computing services and Internet-based facilities as if you were using a networked computer on campus.

Please note that this service is provided for authorized university-related computing only, as outlined in the Policy *Use of University Information Technology Services*, which can be found on the University's web site at:

<http://www.unisa.edu.au/policies/policies/corporate/C22.asp>

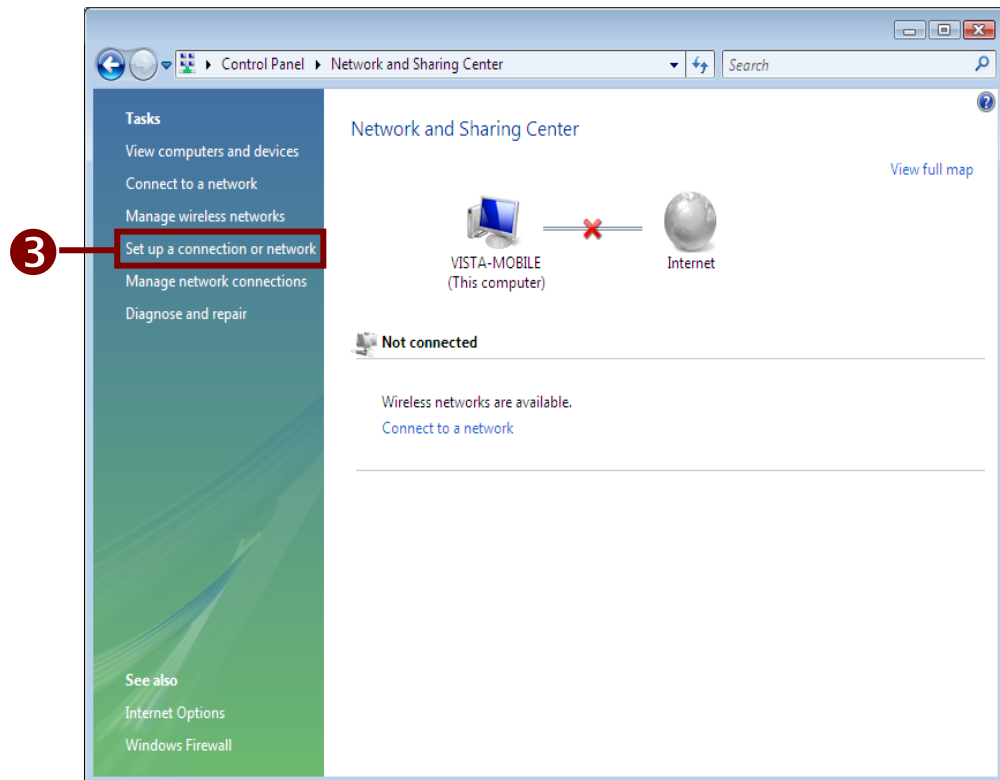
### **IMPORTANT - READ THIS BEFORE CONTINUING!**

<b>Prerequisites/ Assumptions</b>	In order to proceed with the set up detailed in this guide you will need a valid University of South Australia username and password.
<b>Hardware requirements</b>	You will need to have a notebook computer with either in-built wireless capability or an 802.11b or 802.11g wireless card.
<b>Note</b>	If you use 802.1x to connect, you do not need to use any VPN Client software (PPTP or IPSec).

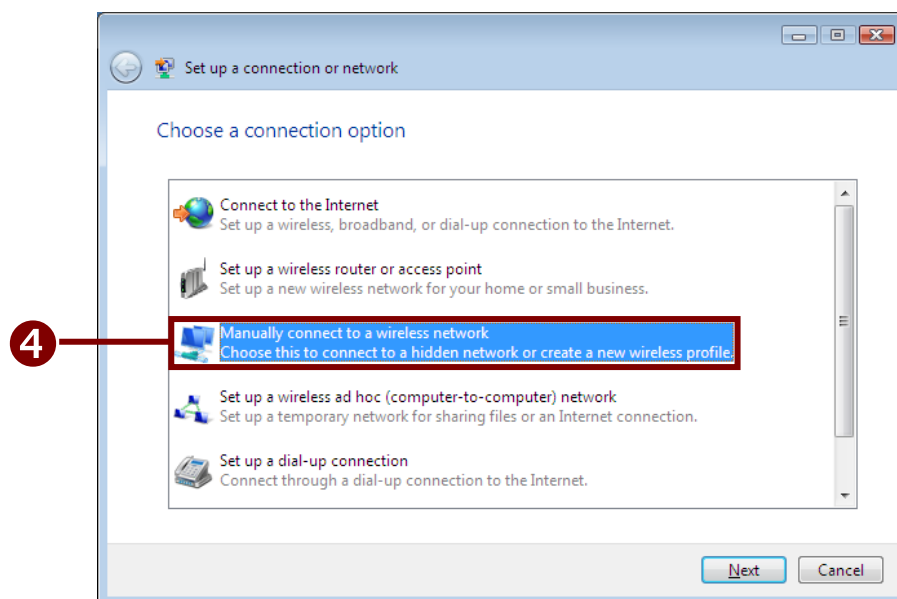
## Setting up your wireless connection

[<to contents](#)

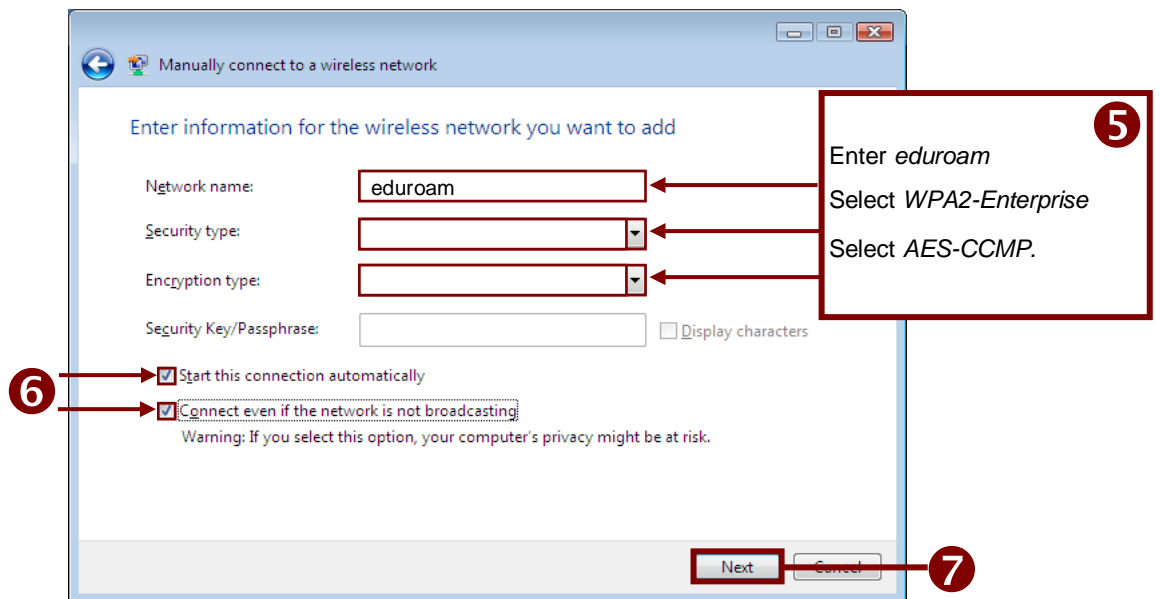
1. Ensure that your Wireless Network Card is enabled.
2. Open the *Network and Sharing Center* from the Control Panel.
3. Select *Set up a connection or network* from the Tasks menu.



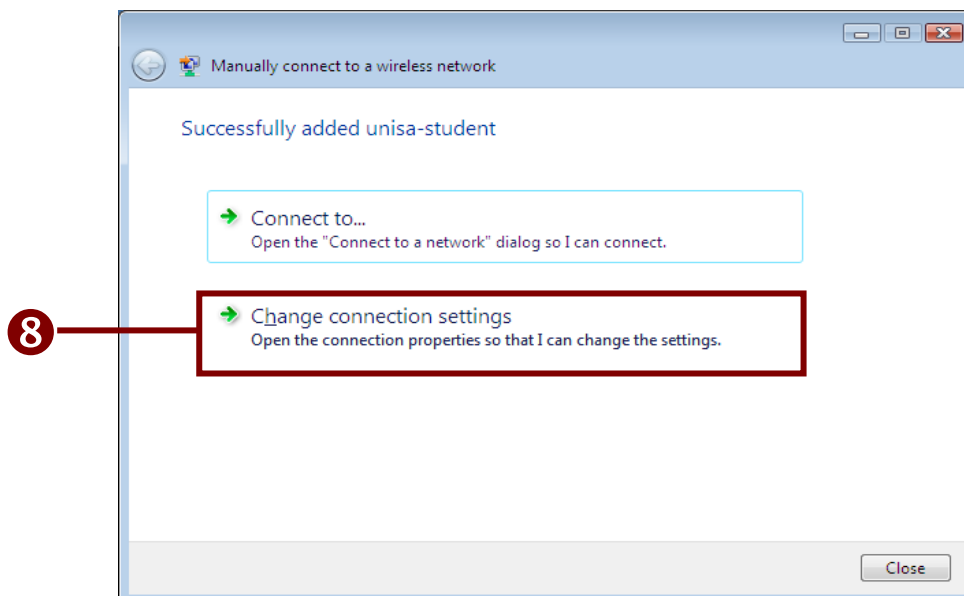
4. Click on *Manually connect to a wireless network* to highlight it; then click the *Next* button to continue.



5. Complete the wireless network information.
6. Ensure that **both** the *Start this connection automatically*, and the *Connect even if the network is not broadcasting* checkboxes are ticked.
7. Click the *Next* button to continue.

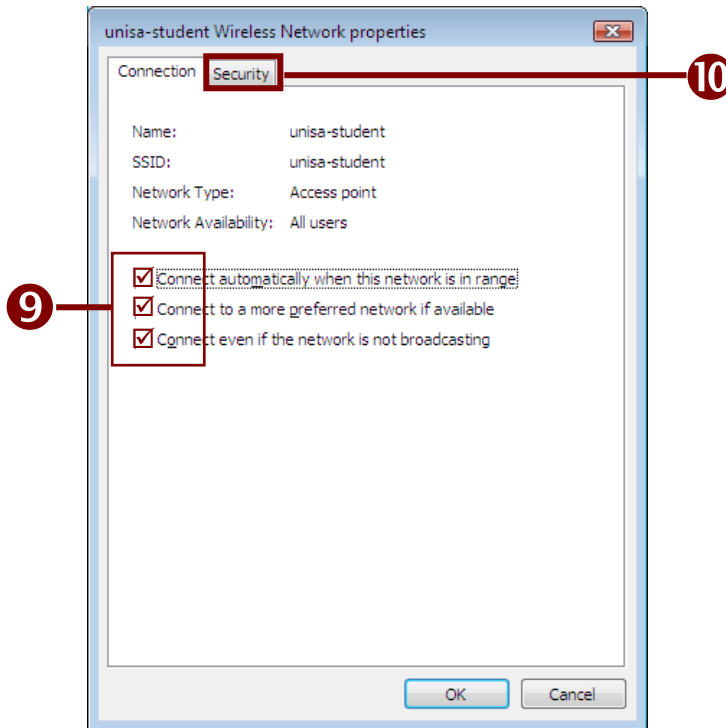


8. Click on *Change connection settings*.

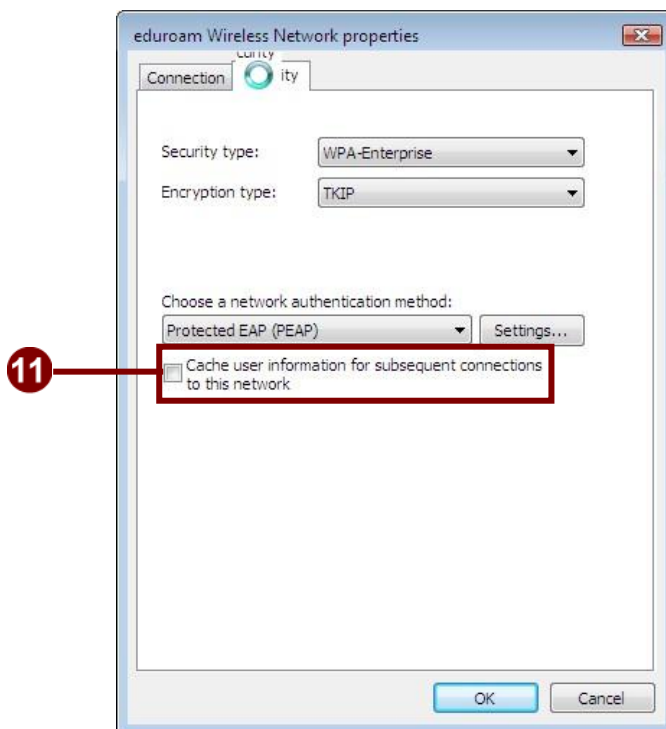


The following window is displayed.

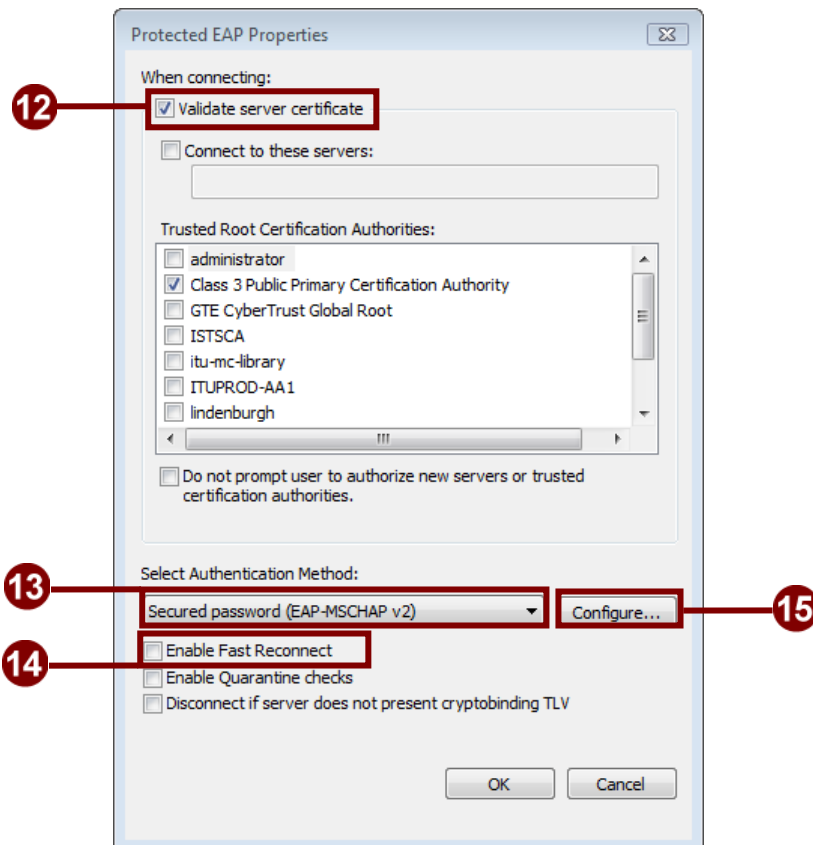
9. Ensure that the connection settings match those below.
10. Click on the **Security** tab.



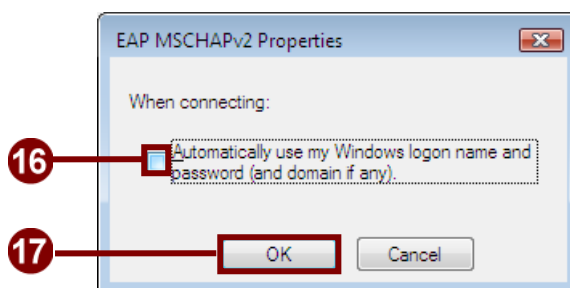
11. Ensure that the checkbox is not checked, then click on the **Settings ...** button.



12. Check the *Validate server certificate* box.
13. Ensure that *Secured password (EAP-MSCHAP v2)* is selected.
14. Ensure that the *Enable Fast Reconnect* box is not checked.
15. Click on the *Configure ...* button.



16. Ensure that the check box is unchecked.
17. Click on the *OK* button.

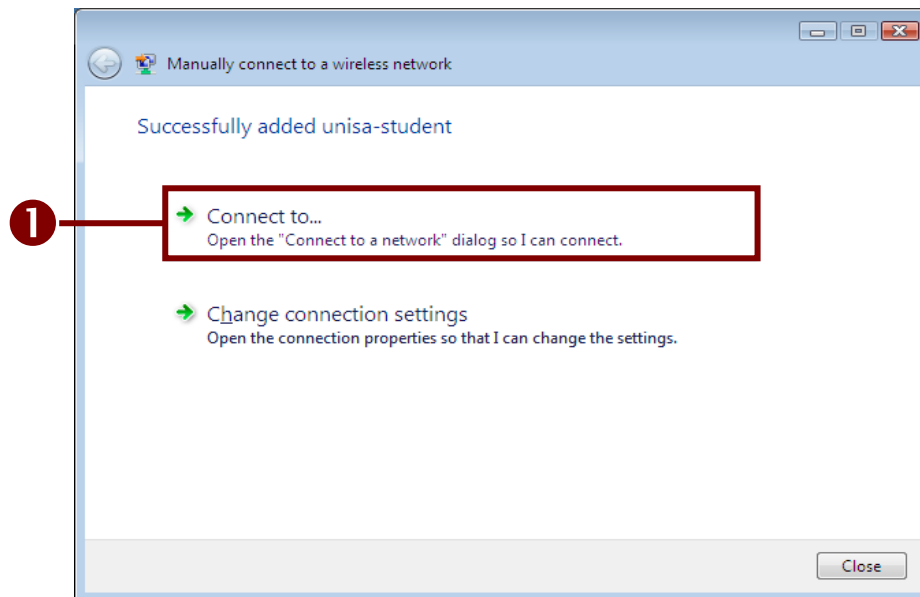


18. Return to the connection dialog, by clicking *OK* on each of the open Properties dialogs.

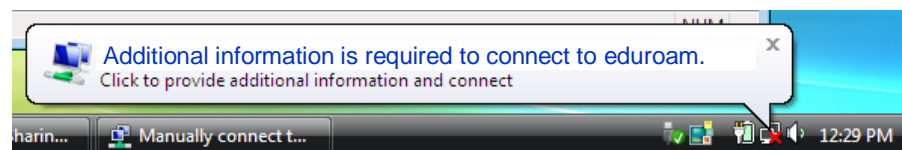
## Connecting to the wireless network

[<to contents](#)

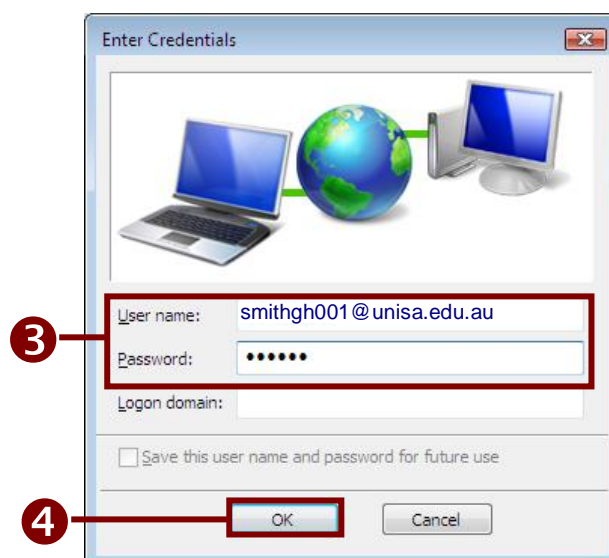
1. Click on *Connect to...* a 'pop-up balloon' is displayed at the bottom of your computer's display.



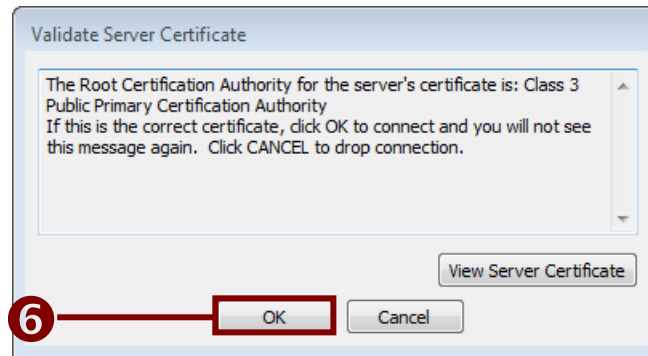
2. Click in the balloon area, this will display the logon dialog box:



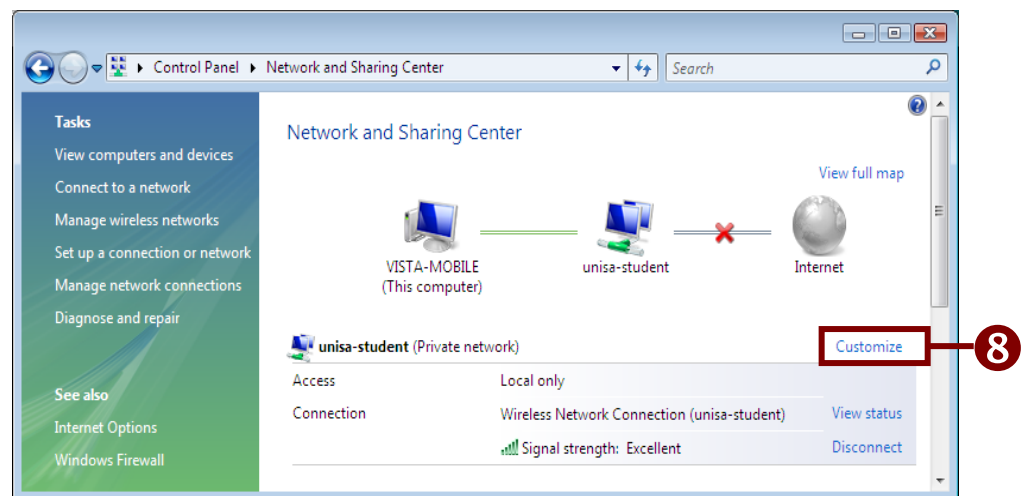
3. Enter your university account name, and your account password. You do not need to include '@unisa.edu.au' unless you are attempting to connect at a university other than University of South Australia.
4. Click on *OK*.



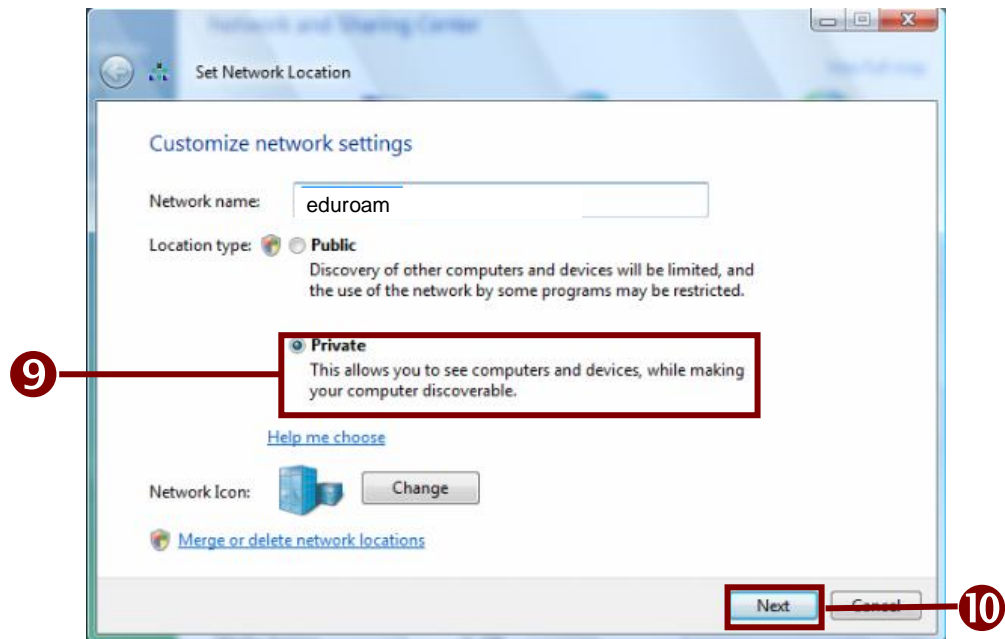
5. If you have not previously connected to the wireless network the pop-up balloon will appear again. Click on it and proceed to step 6, otherwise proceed to step 7.
6. Click on **OK** to accept the Server Certificate – you must do this to continue with the connection. The *Network and Sharing Center* will commence the authentication process.



7. Once you have been authenticated, the wireless network will be displayed instead of *Identifying ...*
8. Click on the *Customize* link.



9. Click on the *Private* button in the following dialog.
10. Click on the *Next* button, and then close the previous dialog box. You should now be connected to the network.



## Setting up Internet Explorer 7 (all versions of Vista)

[<to contents](#)

**Warning:** the following section requires you to make changes to the Registry on your computer. Making changes to the registry can result in damage to the Windows operating system.

If you are unsure about this process, please seek assistance, or consider using an alternative internet browser.

You should back up your registry file before proceeding.

If you are using Internet Explorer 7 to connect to the University proxy servers, you will need to make changes to the registry settings. To do this you must:

- Ensure that you are logged on to your computer with administrator privileges; and
- Ensure that “User Account Control” has been disabled. Please refer to the following web page for instructions:

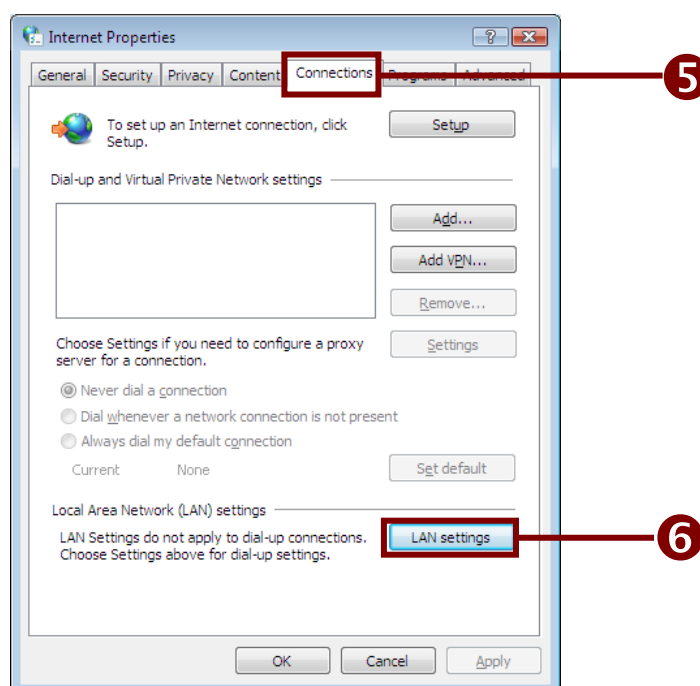
[http://www.petri.co.il/disable\\_uac\\_in\\_windows\\_vista.htm](http://www.petri.co.il/disable_uac_in_windows_vista.htm)

Once you have completed the above steps, you can apply the change by either:

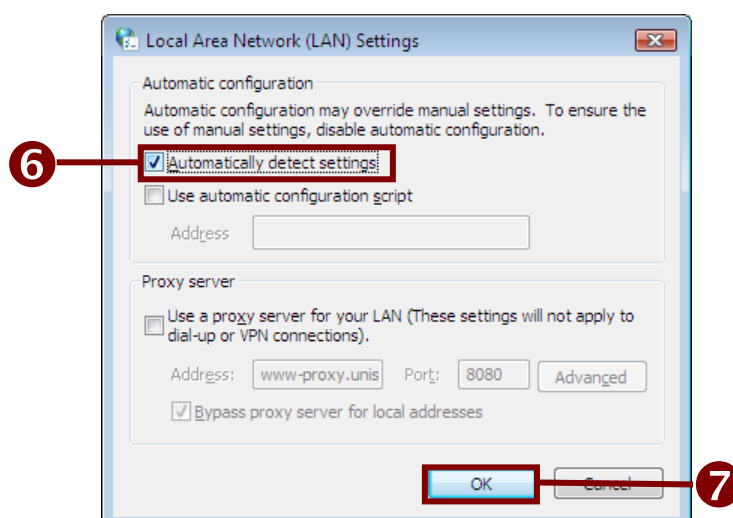
1. Downloading the registry file from the website to a folder on your PC, and then double-clicking it to run it; or
2. Copying the following command into the command line prompt on your PC. Note you must copy the line exactly as it is shown below, and paste it. Press *Enter* to execute the command:

```
reg add HKLM\SYSTEM\CurrentControlSet\Control\Lsa /v Imcompatibilitylevel /t REG_DWORD /d 1
```

3. In the Control Panel, open the *Internet Options* control.
4. Click on the *Connections* tab.
5. Click on the *LAN Settings* button.



6. Check the *Automatically detect settings* box.
7. Click on *OK* to close the settings dialog.



8. Click *OK* to close *Internet Options* controls.
9. Open Internet Explorer and try connecting to a website outside of the University (e.g. [www.news.com.au](http://www.news.com.au)). If you are prompted for your username and password you have configured your browser successfully.

If you receive a “proxy not found” error you will need to manually configure your proxy settings. Instructions can be found on the following webpage:

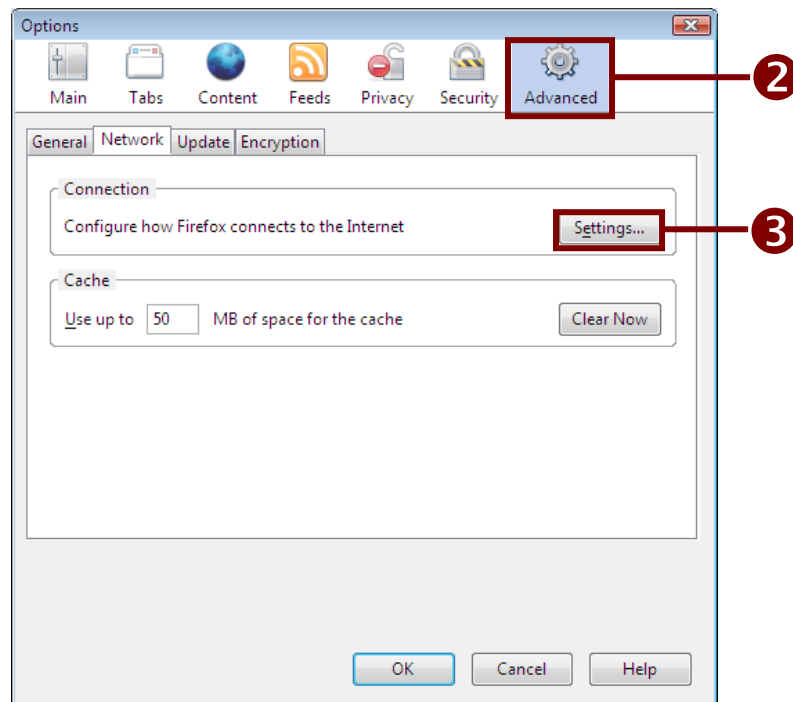
<http://www.unisa.edu.au/ists/Staff/Purchasing/Hardware/proxyconfig.asp#manual>

## Setting up Firefox 2.0 (all versions of Vista)

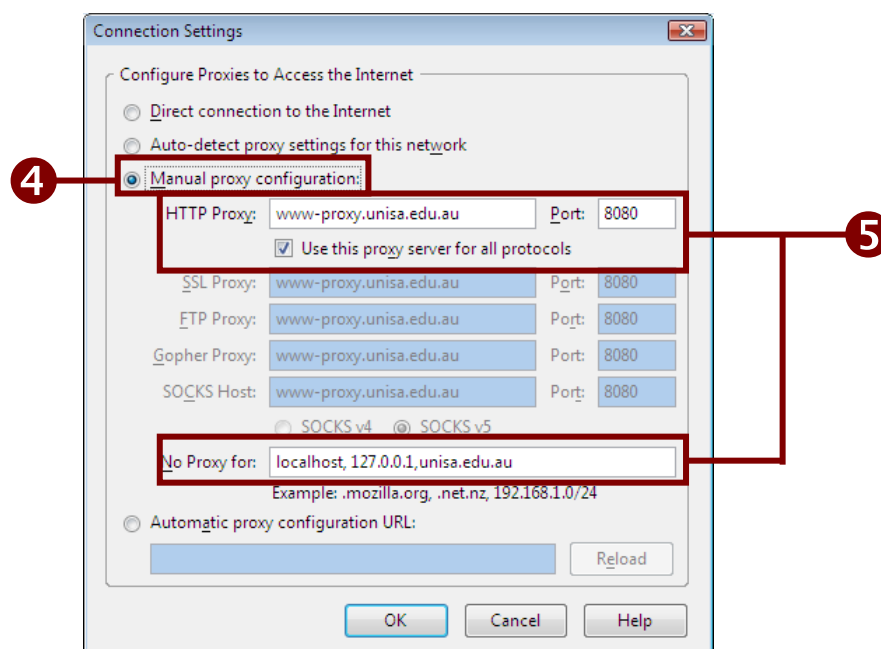
[<to contents](#)

To configure Firefox 2.0 on a Vista PC:

1. Start Firefox and select the *Options* choice in the *Tools* menu.
2. Click on the *Advanced* settings icon and select the *Network* tab.
3. Click on the *Settings ...* button.



4. Click on *Manual proxy configuration*.
5. Configure the proxy settings as shown below, then click on *OK* in all the open dialogs to close them. You can now access the Internet.

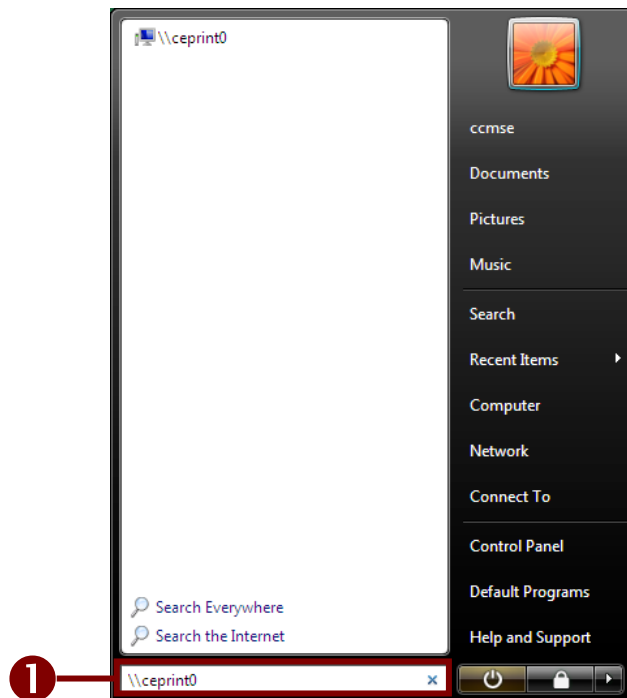


## Setting up printers

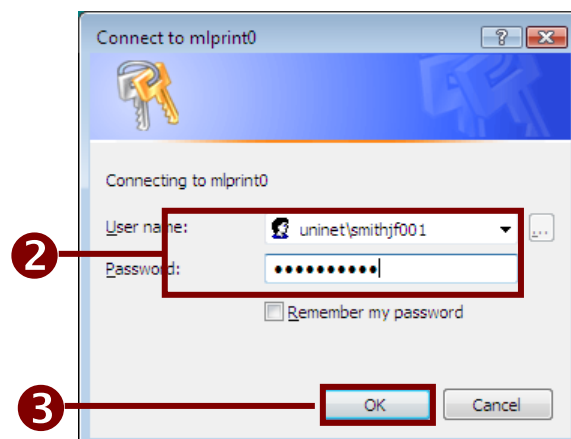
[<to contents](#)

To use your notebook with a student printer on-campus:

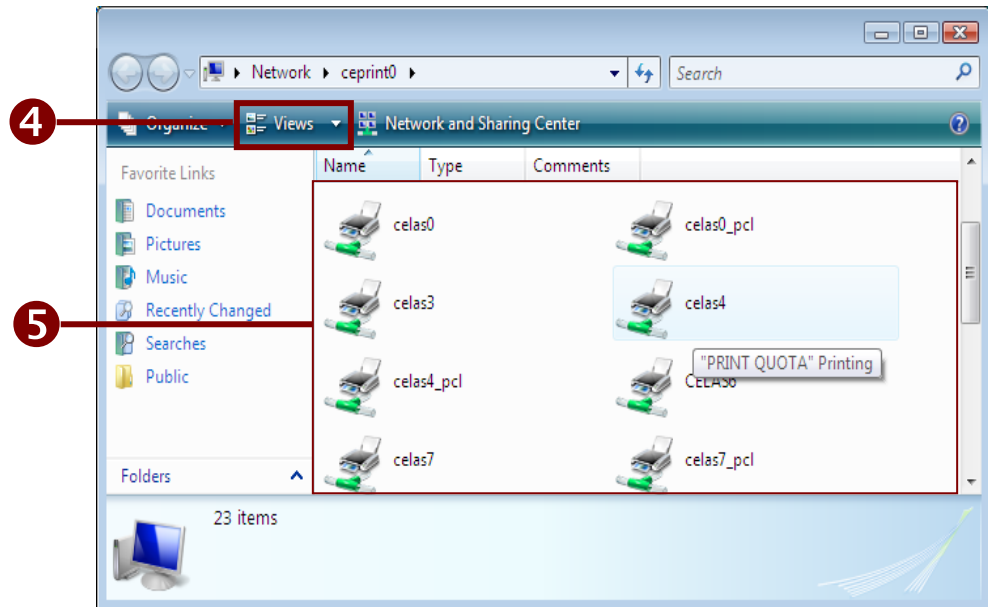
1. Click on the **Start** button, and enter the name of the Print Server for your campus in the **Search** field and press **Enter**.
  - `\\ceprint0` – City East
  - `\\ceprint1` – City West
  - `\\mgprint0` – Magill
  - `\\mlprint0` – Mawson Lakes
  - `\\whprint0` – Whyalla



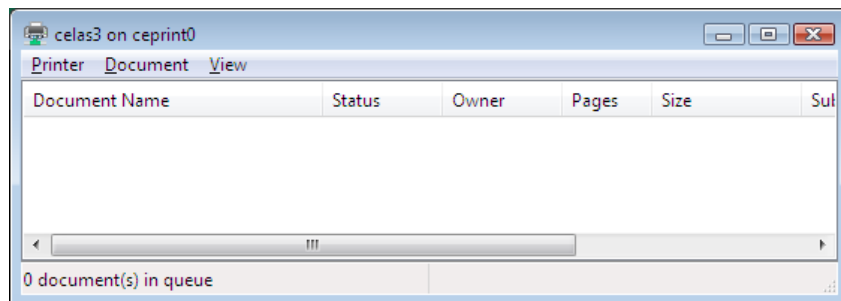
2. In the connection dialog box enter your username in the form `UNINET\smithjr001` and your password.
3. Click **OK**, a list of available printers is displayed.



4. From the *Views* drop-down list, select *details*. This will allow you to view the locations of the printers.
5. Double-click on printer you want to use during this session; this will display the printer queue.



6. Once installed, you will be able to use the printer whenever you connect to the University network.



To use a different printer, repeat steps 1 to 5 for the new printer.

## Connecting to the Internet (Students)

[<to contents](#)

When you attempt to connect to the Internet you may be prompted to connect to the University's proxy server: enter your UniSA *username* and *password*.

If after entering this information and pressing *OK* your login fails, re-enter the information, but prefix your *username* with UNINET - e.g. uninet\bloggs001.

