



Getting connected to eduroam

Windows XP Service Pack 3

Version: 1.1

Sep, 2008

Introduction	2
Configuring your Eduroam connection.....	3
Connecting to Eduroam.....	7
Troubleshooting the connection.....	8
Connecting to the Internet (Students).....	9

Introduction

[<to contents](#)

This guide describes how to set up Windows XP to connect to eduroam through the University of South Australia's wireless network.

IMPORTANT - READ THIS BEFORE CONTINUING!

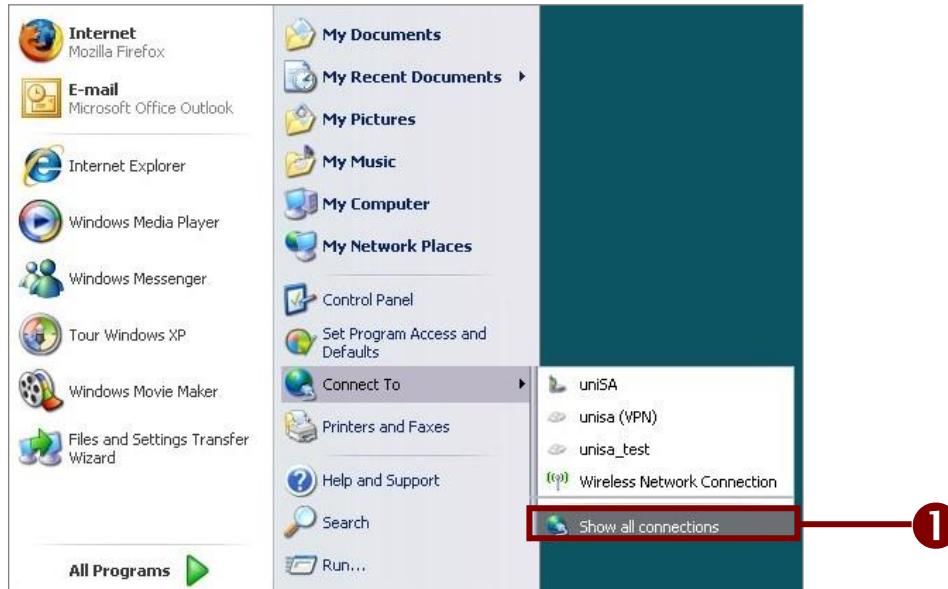
Prerequisites/ Assumptions	In order to proceed with the set up detailed in this guide you will need a valid account at your home university.
Hardware requirements	You will need to have a notebook computer with either in-built wireless capability or an 802.11b or 802.11g wireless card.
Software requirements	802.1x uses WPA. WPA - Windows XP Service Pack 3.

Configuring your eduroam connection

[<to contents](#)

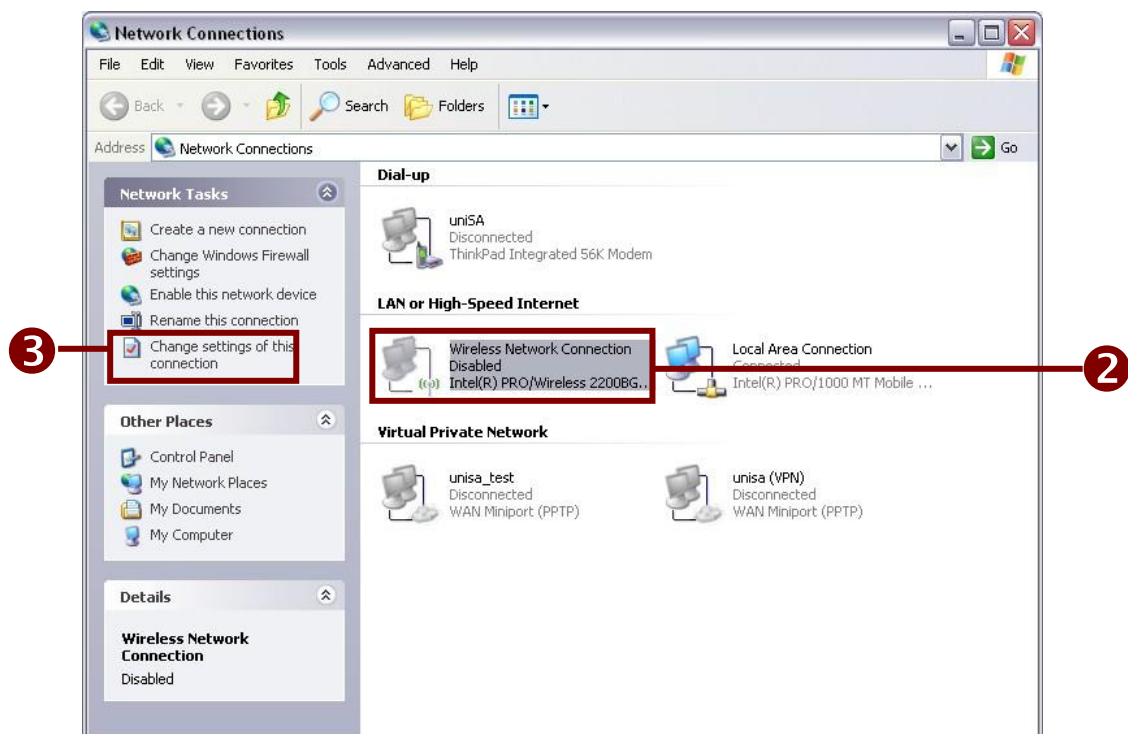
1. Open Network connections:

Start Menu → Connect to → Show all connections

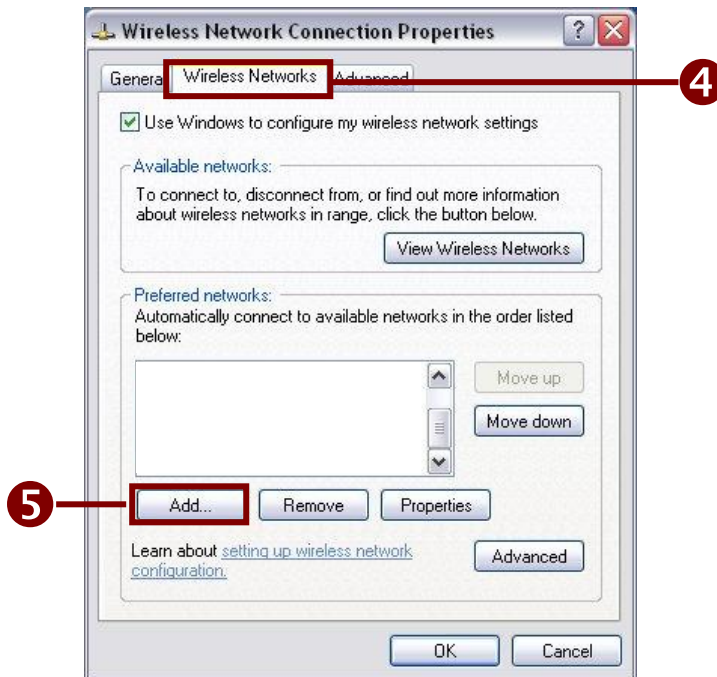


2. Click on the *Wireless Network Connection* icon.

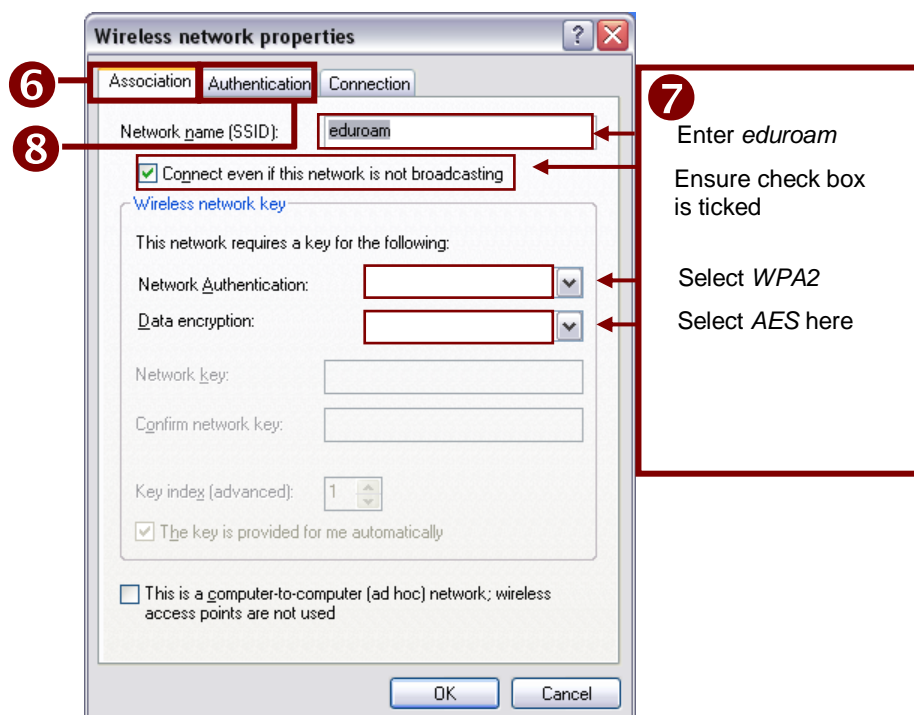
3. Click the *Change settings of this connection* link from the *Network Tasks* column. This opens the *Wireless Network Connection Properties* window.



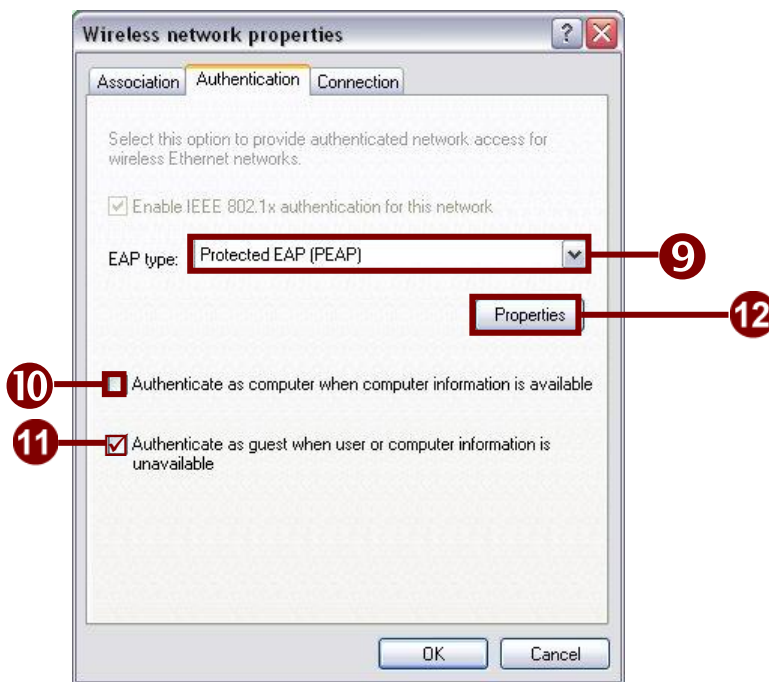
4. Click on the *Wireless Networks* tab.
5. Click on the *Add ...* button.



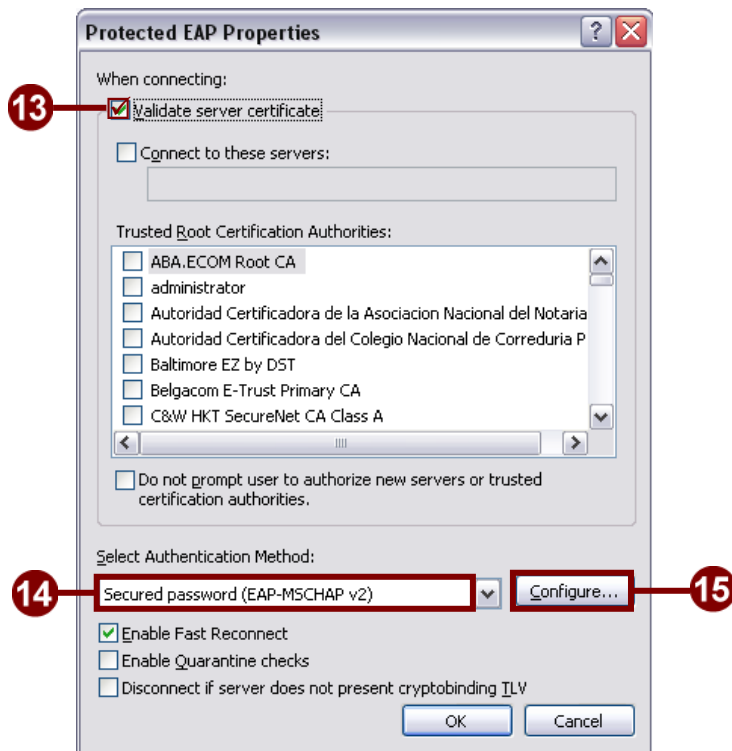
6. Ensure that the *Association* tab is selected.
7. Enter the required information and ensure that the *Connect even if this network is not broadcasting* check box is ticked.
8. Click on the *Authentication* tab.



9. Select *Protected EAP (PEAP)* for the EAP type from the drop-down list.
10. Uncheck the *Authenticate as computer when computer information is available* checkbox.
11. Check the *Authenticate as guest when user or computer information is unavailable* checkbox.
12. Click the *Properties* button.



13. Ensure that the *Validate server certificate* check box is ticked.
14. Select *Secured Password (EAP-MSCHAP v2)* as the *Authentication Method*.
15. Click on the *Configure...* button.



16. Ensure that the check box *Automatically use my Windows logon name and password* is un-checked. (please note if the laptop has joined into uninet and you currently log in it by using your UniSA username and password, you may keep leave this checkbox ticked).
17. Click on *OK* to close the dialog box.

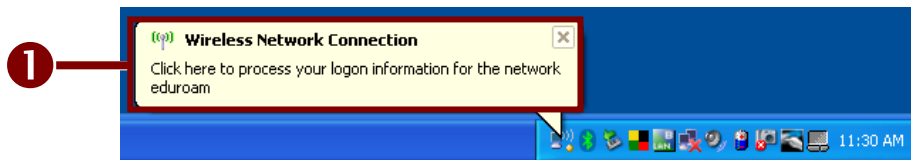


18. Close any remaining windows, you are now ready to connect to the wireless network.

Connecting to eduroam

[<to contents](#)

1. When the eduroam network is available a balloon window will appear in the lower right side of the screen. Click on the balloon to process your credentials.



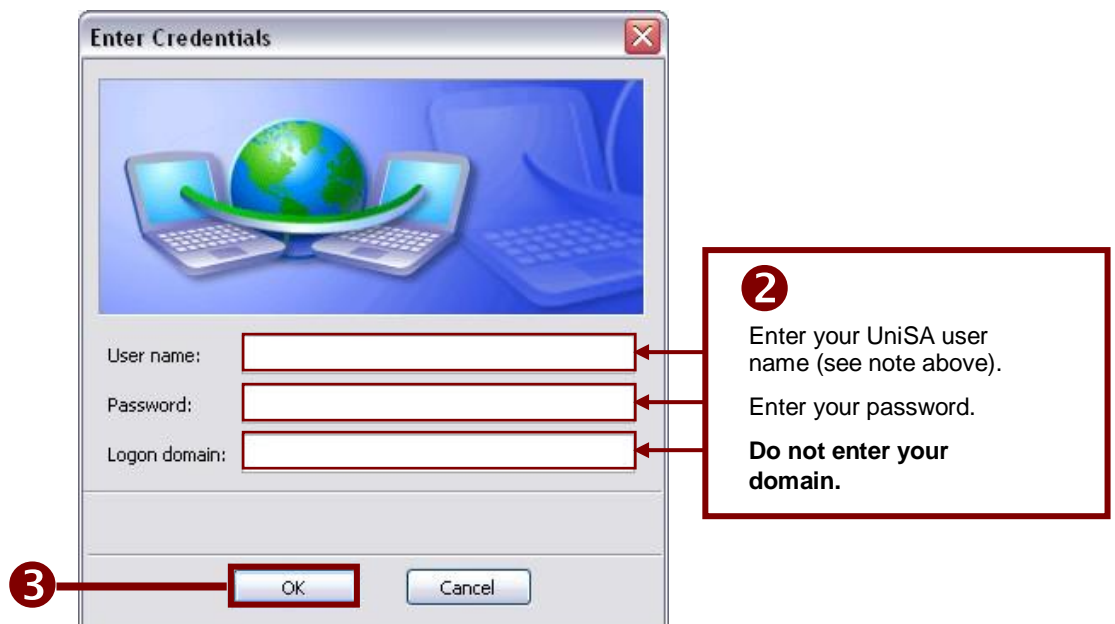
2. Enter your user name and password in the *Enter Credentials* dialog.
NOTE: In order to access the network on another University campus you will need to specify the domain name of your home campus in order to be authenticated.

The format of the eduroam Logon Username should be *username@domain.edu.au*.

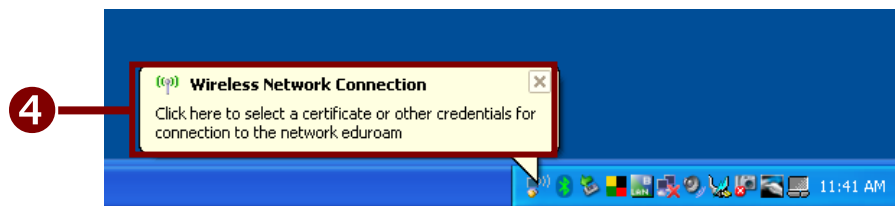
UniSA staff and students should use their network logon name (eg bloggsja) with the domain name *unisa.edu.au*. ie. bloggsja@unisa.edu.au

Enter the eduroam Logon User name and your usual UniSA network account Password. Do not enter any information in the *Logon domain* box.

3. Click *OK* to continue. Another balloon will appear.



- Click on the balloon to accept the security certificate.



- The *Validate Server Certificate* dialog window will appear. Click the *OK* button to accept the security certificate.

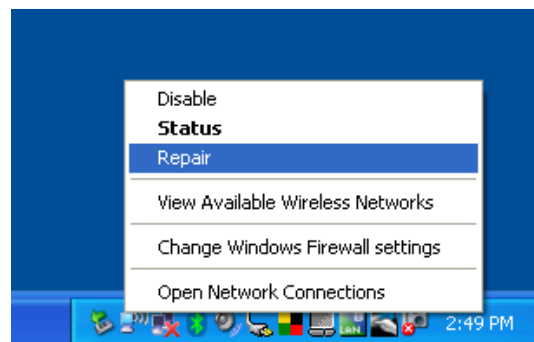


Troubleshooting the connection

[<to contents](#)

If you are experiencing difficulty connecting to the eduroam network, try repairing the connection.

- Move the mouse over the *wireless network connection* icon in the toolbar. Right mouse click on the icon. Select *Repair* from the context menu. This action will trigger windows to reset the wireless network connection and start the connection to the Eduroam network.



If you are still experiencing difficulties, call the IT Help Desk for support on extension number 25000. Outside callers can reach the IT Help Desk on 8302 5000.

Connecting to the Internet (Students)

[<to contents](#)

When you attempt to connect to the Internet you may be prompted to connect to the University's proxy server: enter your UniSA *username* and *password*.

If after entering this information and pressing *OK* your login fails, re-enter the information, but prefix your *username* with UNINET - e.g. uninet\bloggs001.

