



University of South Australia
Information Strategy and Technology Services

Getting connected to the UniSA Network

Windows 7

Version: 2.1

August 2010

Introduction	2
Connecting to the Wireless Network.....	3
Setting up Internet Explorer 7	5

Introduction

[<to contents](#)

This guide describes how to set up Windows 7 to connect to the University of South Australia's wireless network:

Please note that this service is provided for authorized university-related computing only, as outlined in the Policy *Use of University Information Technology Services*, which can be found on the University's web site at:

<http://www.unisa.edu.au/policies/policies/corporate/C22.asp>

IMPORTANT - READ THIS BEFORE CONTINUING!

Prerequisites/ Assumptions	In order to proceed with the set up detailed in this guide you will need a valid University of South Australia username and password.
Hardware requirements	A notebook computer with 802.11g wireless networking.
Software Requirements	You will need to be running Windows 7 (32-bit).

Connecting to the Wireless Network

1. Click on the wireless connection icon in the system tray: a list of available networks is displayed.



2. Click on the *eduroam* entry.



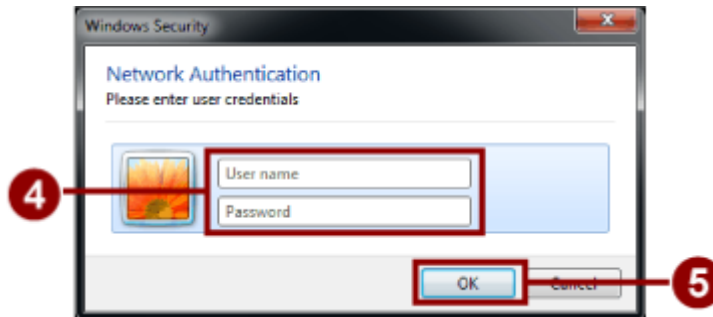
3. Click *Connect*. The connection process will commence: a status window will be displayed.



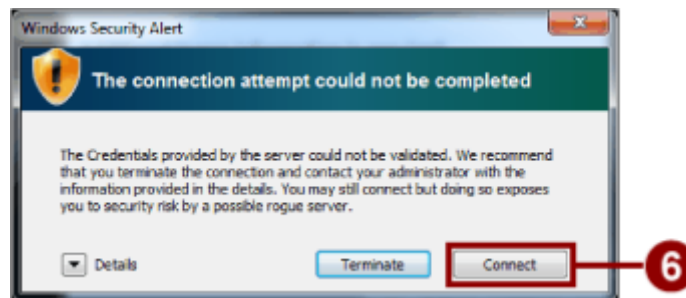
4. Enter your user name and password in *the Network Authentication* dialog.

Note: *User name* must be entered in full e.g. *smithj@unisa.edu.au*.

5. Click *OK*.

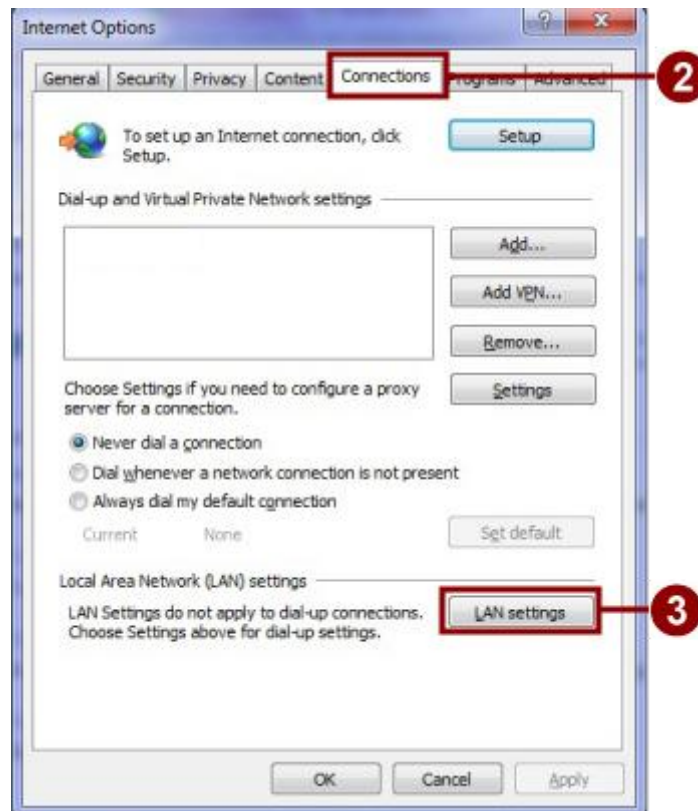


6. In response to the *Windows Security Alert* dialog, click on *Connect*.



Setting up Internet Explorer 7

1. In the Control Panel, open the *Internet Options* control.
2. Click on the *Connections* tab.
3. Click on the *LAN Settings* button.



4. Check the *Automatically detect settings* box.
5. Click on *OK* to close the settings dialog.



6. Click *OK* to close *Internet Options* controls.
7. Open Internet Explorer and try connecting to a website outside of the University (e.g. www.news.com.au).

If you receive a “proxy not found” error you will need to manually configure your proxy settings. Instructions can be found on the following webpage:

<http://www.unisa.edu.au/ists/Staff/Purchasing/Hardware/proxyconfig.asp#manual>

8. If you are prompted for your username and password you have configured your browser successfully. You must enter your username in the following format – Uninet\mars001 .