



**University of South Australia**  
Information Strategy and Technology Services

## **Getting connected to the UniSA Network using the Cisco IPSec Client**

**Windows XP and Vista (all versions)**

*Version: 1.2*

*January 2012*

---

<b>Introduction .....</b>	<b>2</b>
<b>Installing the IPSec Client.....</b>	<b>3</b>
<b>Connecting to the UniSA network from home .....</b>	<b>7</b>
<b>Disconnecting from the UniSA network .....</b>	<b>9</b>

## Introduction

This guide describes how to set up the Cisco IPSec Client software to connect to the University of South Australia's computer network via either:

1. A third-party Internet Service Provider, or
2. From Student Accommodation or the Open Unisa wireless network.

This service provides you with access to the University's shared computing services and Internet-based facilities as if you were using a networked computer on campus.

Please note that this service is provided for authorized university-related computing only, as outlined in the Policy *Use of University Information Technology Services*, which can be found on the University's web site at:

<http://www.unisa.edu.au/policies/policies/corporate/C22.asp>

### **IMPORTANT - READ THIS BEFORE CONTINUING!**

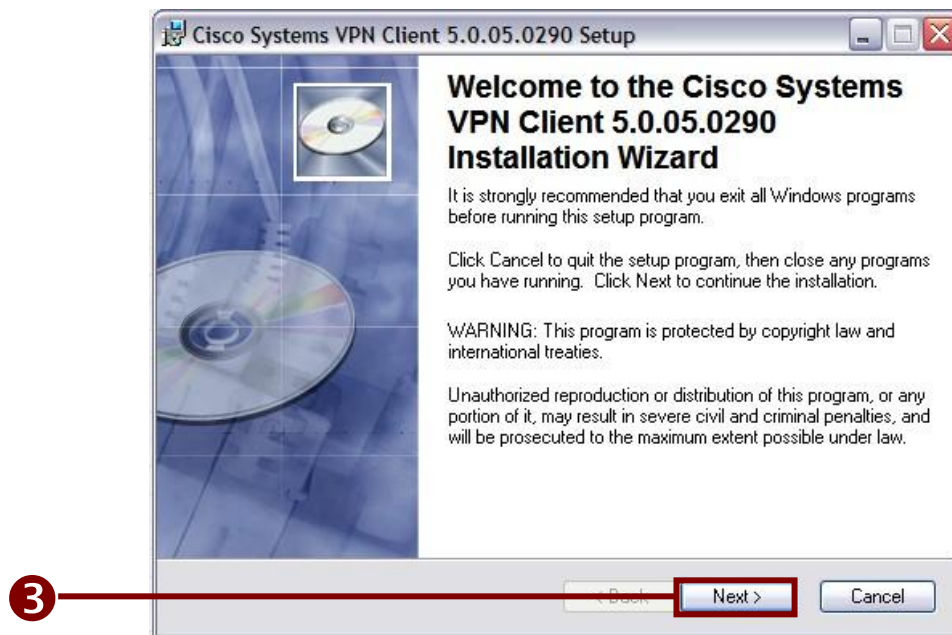
<b>Prerequisites/ Assumptions</b>	In order to proceed with the set up detailed in this guide you will need a valid University of South Australia username and password.
<b>Hardware requirements</b>	A dialup/broadband connection (to connect from home); or A notebook computer with 802.11g wireless networking to connect via the Unisa open wireless network.
<b>Software Requirements</b>	You will need to be running either Windows XP or Windows Vista, and you will need to download the Cisco IPSec client software from the University's website.

## Installing the IPsec Client

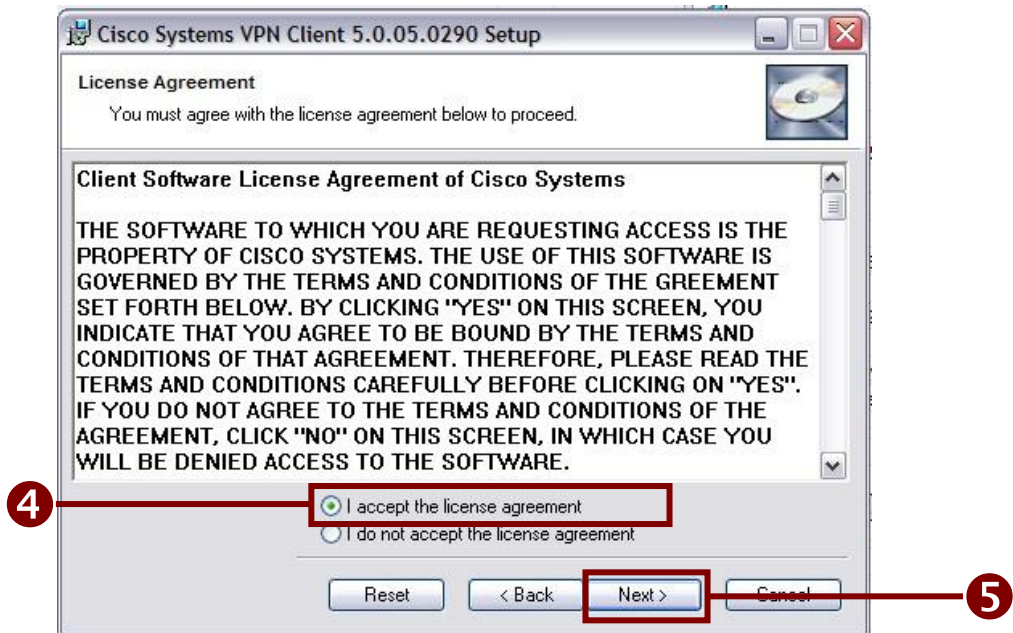
1. Download the software from the website to a location on your PC.
2. Locate the downloaded file on your disk, and double-click on it, this will start the install program. Click on *OK* to continue.



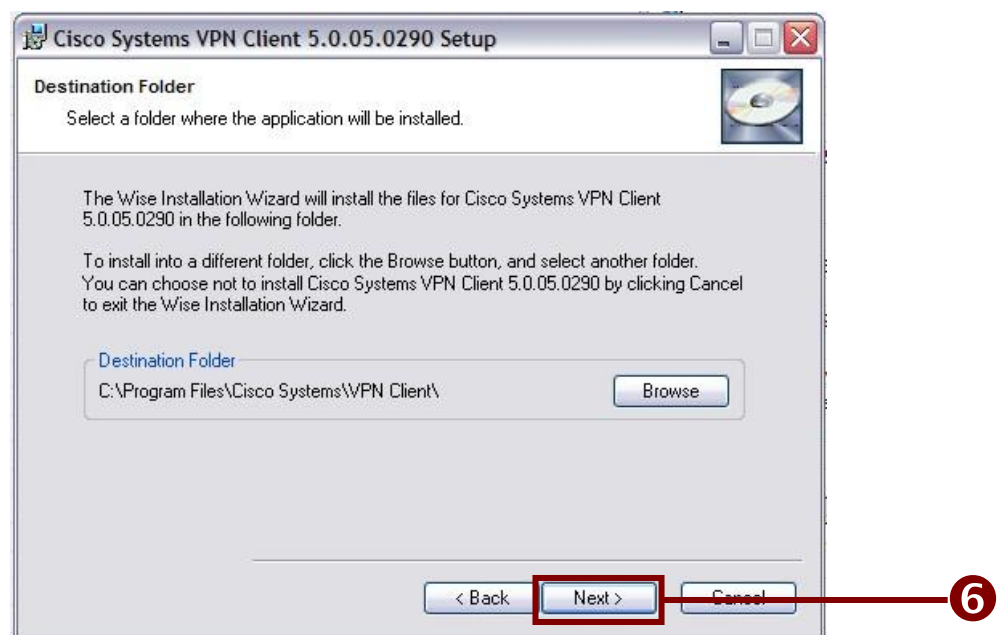
3. Click on the *Next* button to continue.



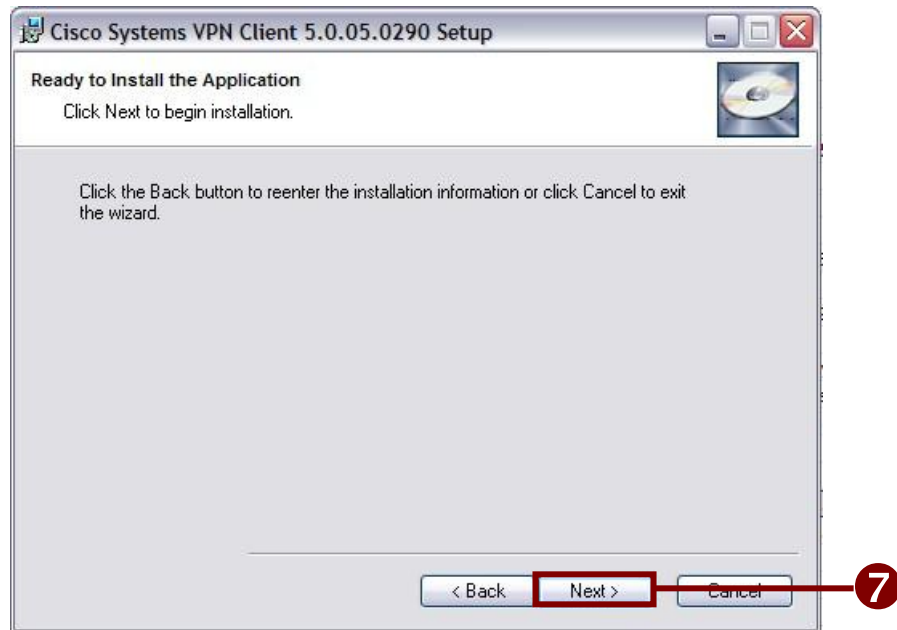
4. Click on *I accept the license agreement*.
5. Click the *Next* button to continue.



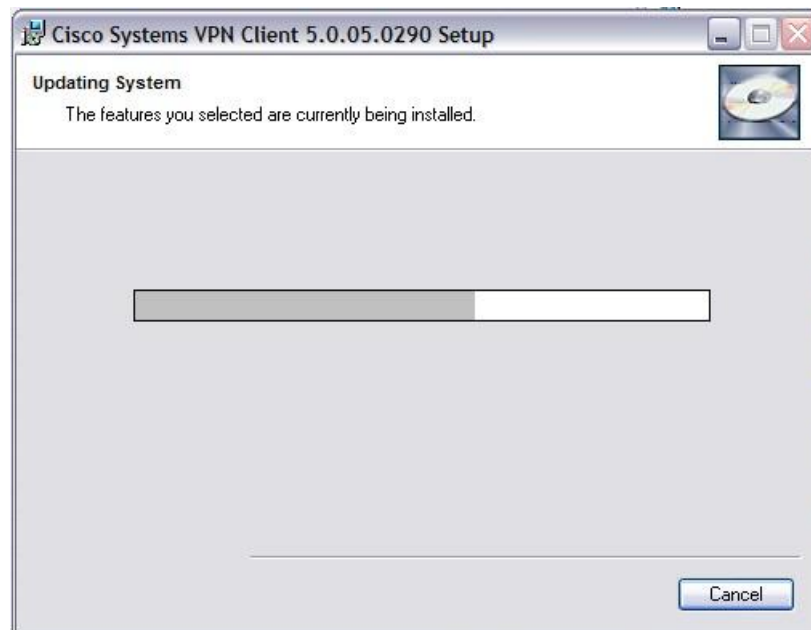
6. The installer now allows you the opportunity to select the location where the software will be installed. Click the *Next* button to accept the default location.



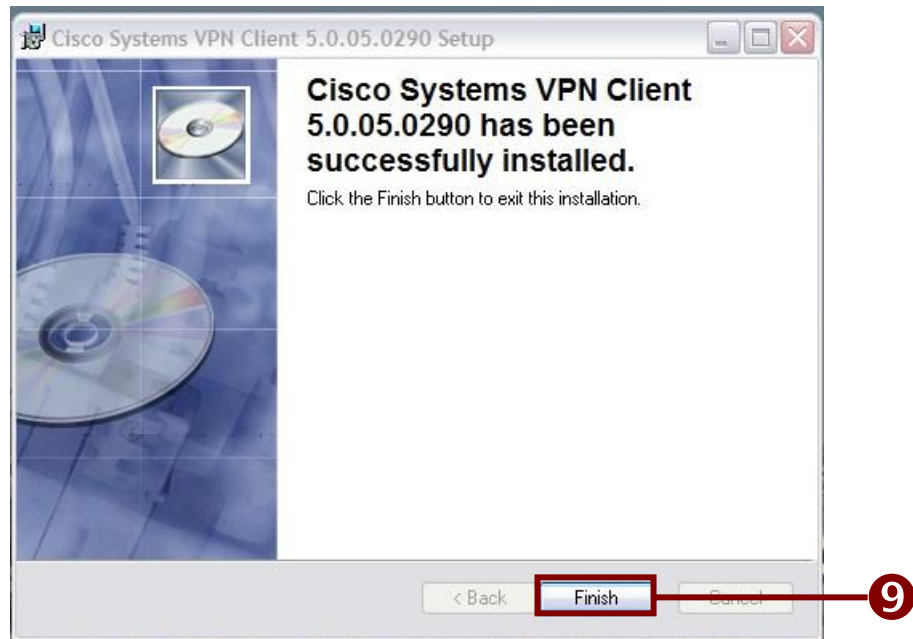
7. If you wish to continue with the installation click on the *Next* Button.



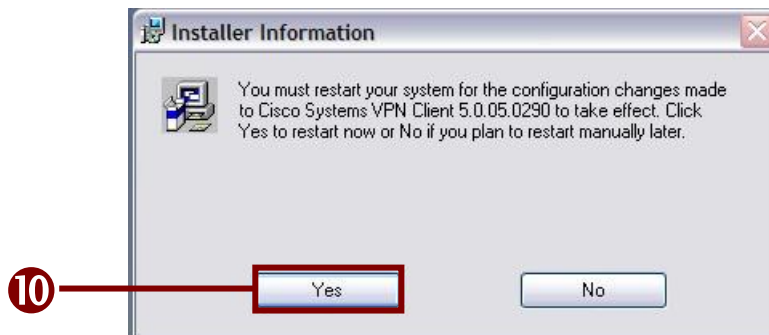
8. The client software is now installed: a progress indicator is displayed while the installation takes place.



- When the installation is complete the following dialog is displayed. Click on the *Finish* button to exit the installation.



- You must restart your computer before you can use the IPsec Client. Click **Yes** to immediately restart your computer.



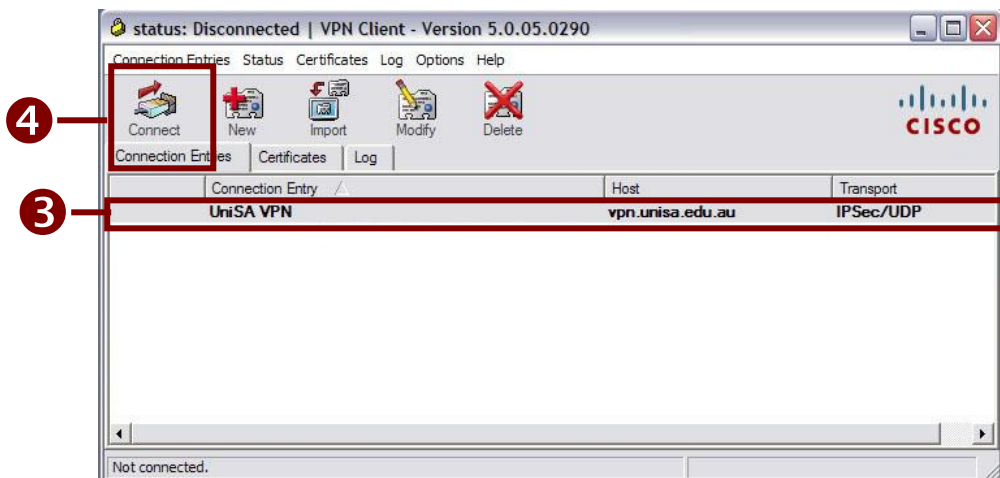
- After restarting your computer you may wish to create a shortcut to the IPsec Client on your desktop make it easier to access.

## Connecting to the UniSA network from home

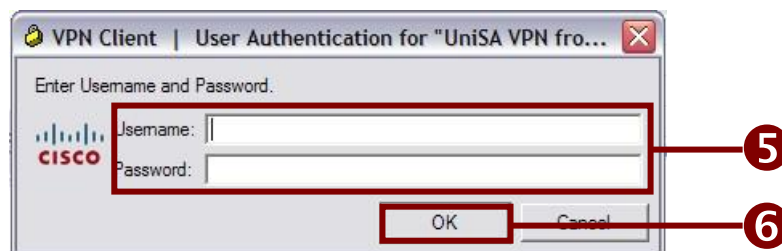
1. Turn on your computer and make sure that your broadband connection is active.
2. Double-click on the shortcut you created in the previous section, or select the *VPN Client* from within the start menu.



3. Ensure that the *UniSA VPN* option is selected.
4. Click on the *Connect* button. The user authentication dialog is displayed.



5. Enter your university account name, and your account password.
6. Click on *OK* to complete the logon process. If your attempt to connect is successful a banner dialog similar to the one shown in 7 below, will be displayed.



7. Click on *Continue*.



8. The dialog box is now closed and you are connected to the University network. You may access all of your resources as you would if working on a PC on campus. An icon for the client software is displayed in the system tray at bottom right-hand corner of the screen.



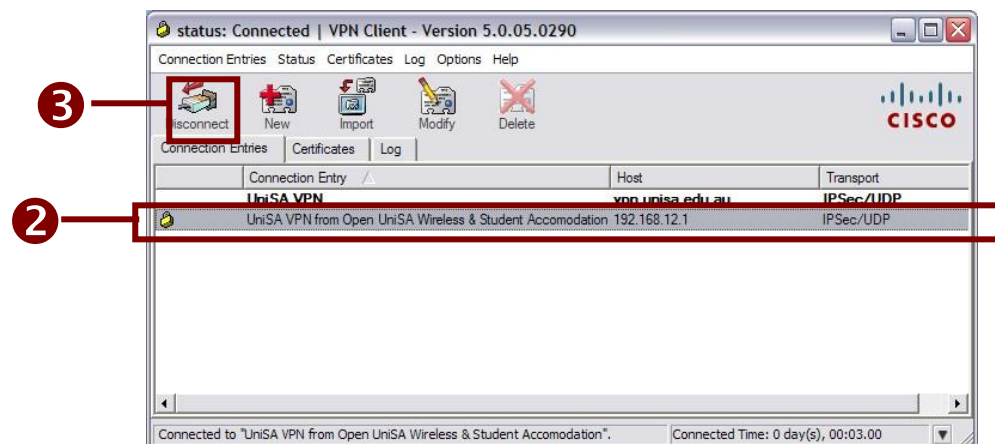
## Disconnecting from the UniSA network

To disconnect from the University network:

1. Double-click on the icon in the system tray. This will maximise the VPN Client window.



2. Ensure that the active connection (the one with the padlock icon) is selected.
3. Click on the *Disconnect* button.



4. You can now close the VPN Client window.