

SPSS Statistics 19 and AMOS 19

Installation Guide

Contents

Introduction	2
Requirements	2
SPSS Statistics Installation Instructions	3
AMOS Installation Instructions	9
Commuter Licence Overview	13
SPSS Statistics Commuter Licence	13
AMOS Commuter Licence.....	15
Setting the Maximum Duration for a Commuter License	17

Introduction

The following guidelines show how to install SPSS Statistics and AMOS as a customised “Network Licensed” installation for UniSA owned equipment (ie with a Blue Plate).

To use SPSS Statistics or AMOS you must be connected to the UniSA network in order to obtain a licence. If you are not connected to the UniSA network the application will not run. Licences are maintained by a licence management server.

If you need to disconnect a computer from the network (eg take a notebook off campus) then a licence may be borrowed from a licence server. By default the maximum time a licence can be borrowed is 7 days (however, this can be extended to 30 days).

IMPORTANT: SPSS products have strict licence conditions. Before using a SPSS product you should read the licence conditions that are published on the web page:

<http://www.unisa.edu.au/ists/Staff/Purchasing/Software/Licensing/SPSSLicensing.asp>.

Information for staff that wish to use SPSS products at home are available from the web page:

http://www.unisa.edu.au/ists/Staff/Purchasing/Software/Licensing/WAH_SPSS.asp

Requirements

To install SPSS Statistics or AMOS you need:

- The target computer system to be connected to the UniSA network.
- Administrator privileges on the target system.
- Access to the installation files on software server.

If you are not an Administrator of the system then you should contact the IT Help Desk (x25000) and they will arrange for local IT support staff to install the software.

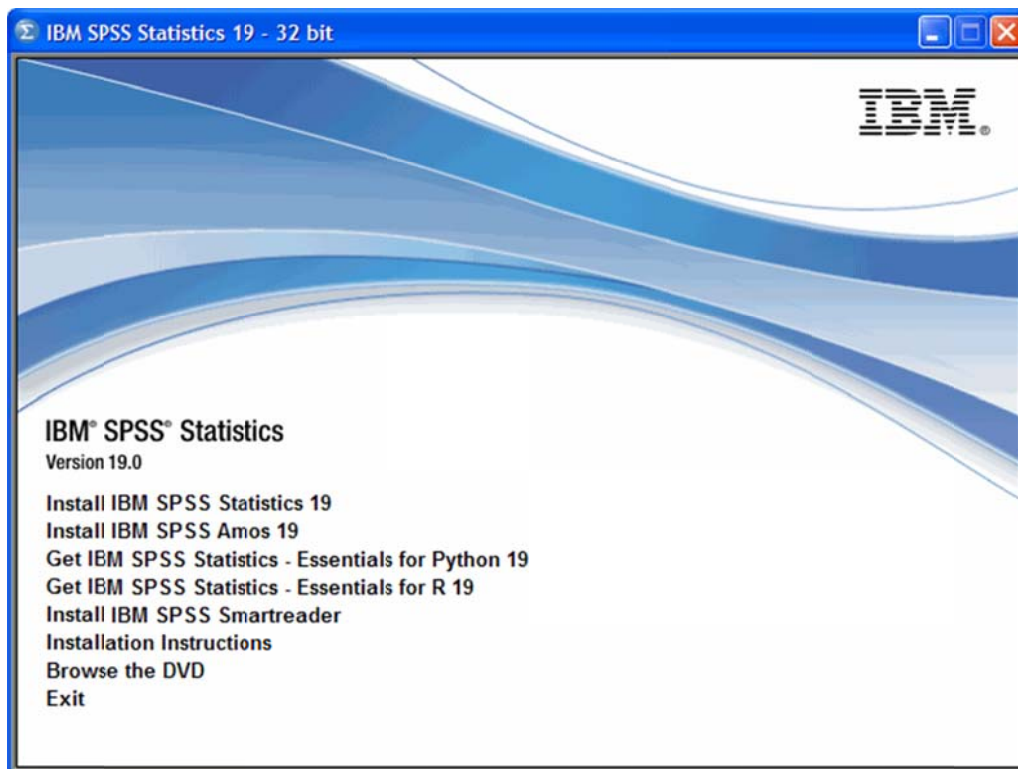
SPSS Statistics Installation Instructions

Uninstall all previous versions of SPSS or PASW Statistics before installing SPSS Statistics 19. As a precaution, ensure that any data is backed up before uninstalling software. If the earlier versions of PASW or SPSS were licensed using a network install i.e. you never entered an authorization code, then you will also need to remove the environment variable "Ishosts". If you aren't comfortable deleting an environment variable or you don't know how please contact the [IT Help Desk](#) and a log a service call with your local IT Team.

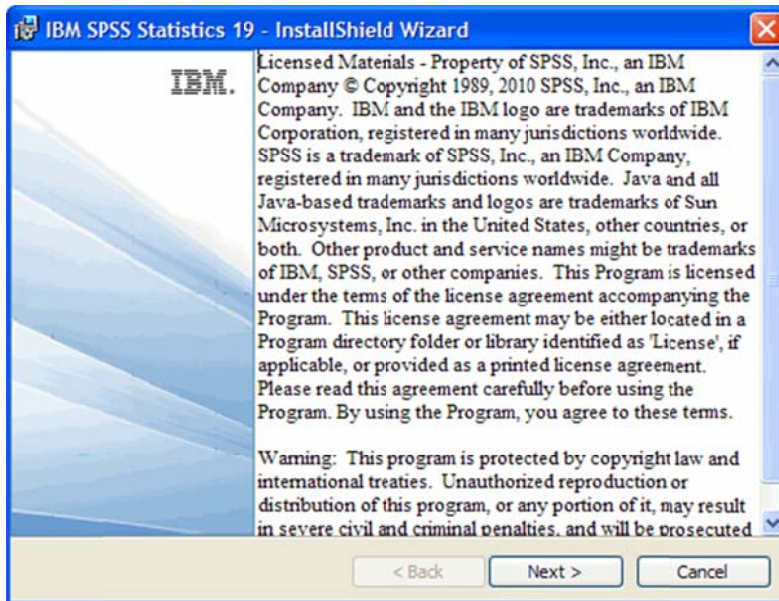
If you require SPSS Statistics 19 to run alongside an earlier version of PASW or SPSS please contact the [IT Help Desk](#) and a log a service call with your local IT Team

To install SPSS Statistics run the installation program (setup.exe) from [\\software\spss\PASW_19\Windows](#)

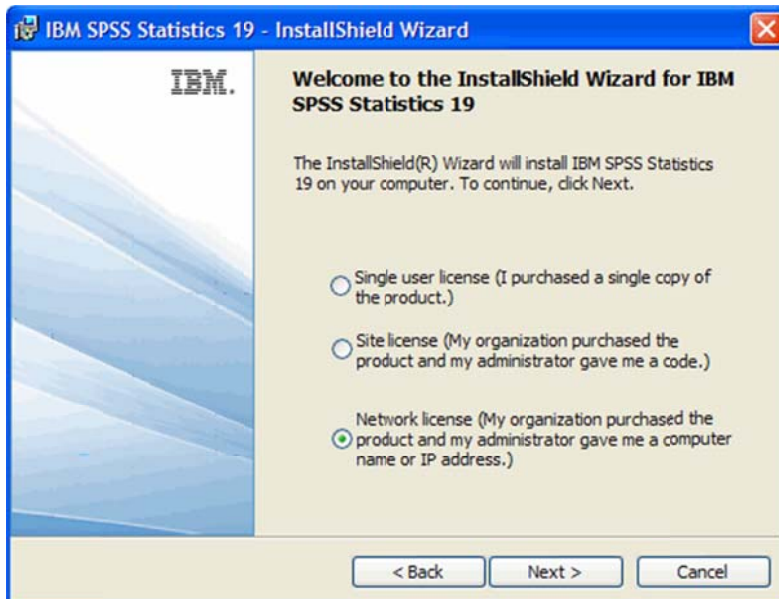
Select "**Install IBM SPSS Statistics 19**"



Click "**Next**".



Select "**Network licence**" when prompted and click "**Next**".



Read the terms of the licence agreement and select “**I accept the terms in the license agreement**” and click “**Next**”.



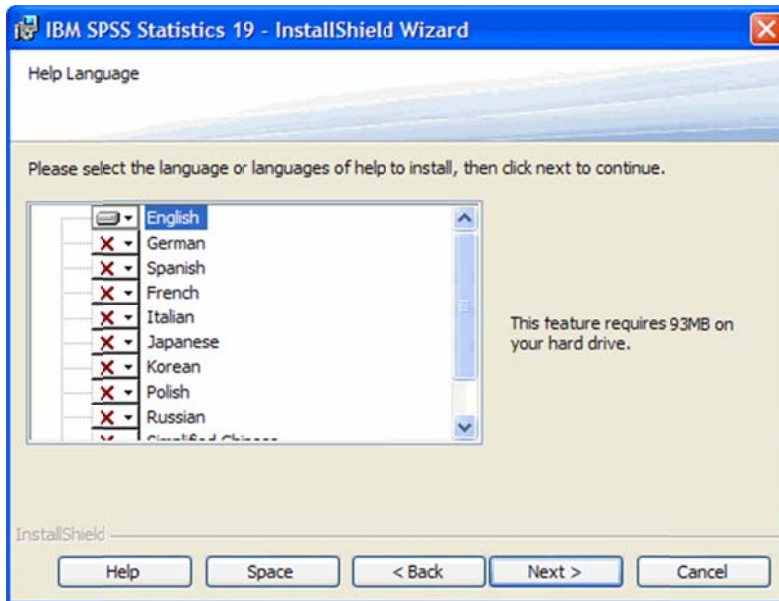
In the “**License Manager name or Server IP Address**” field enter the following text exactly:

spss19-lic.unisa.edu.au

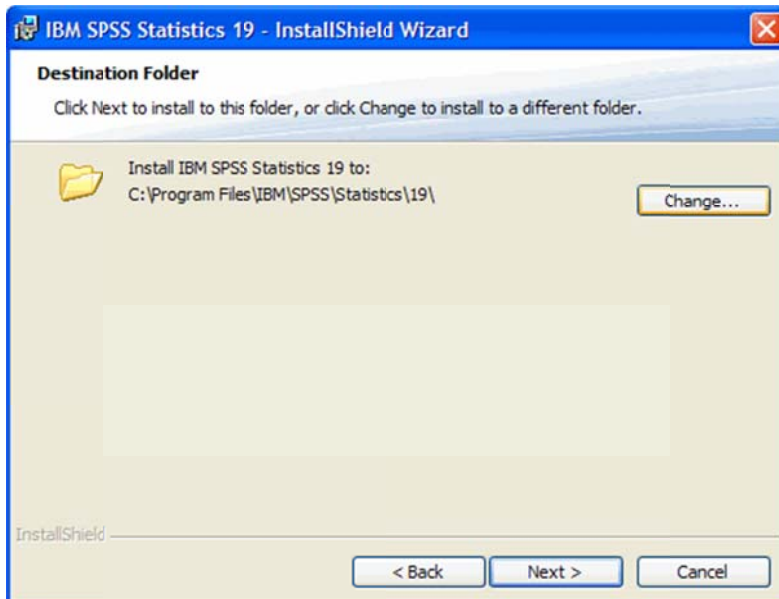
Press “**Set**” and then click “**Next**”



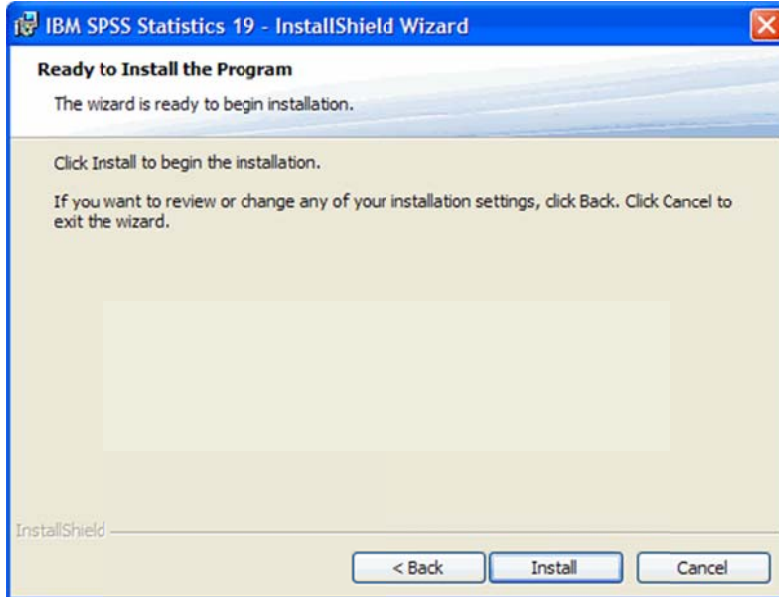
Change the language as required and click “**Next**”.



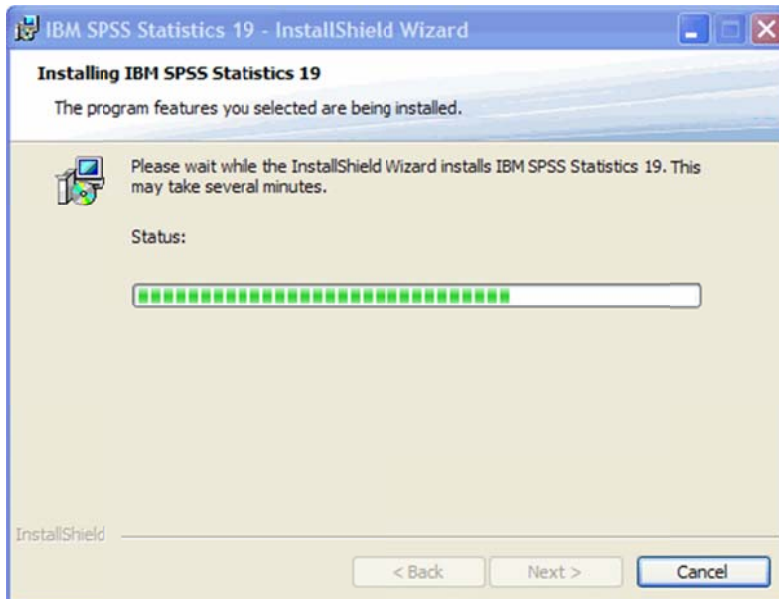
Accept or change the installation folder and click “**Next**”.



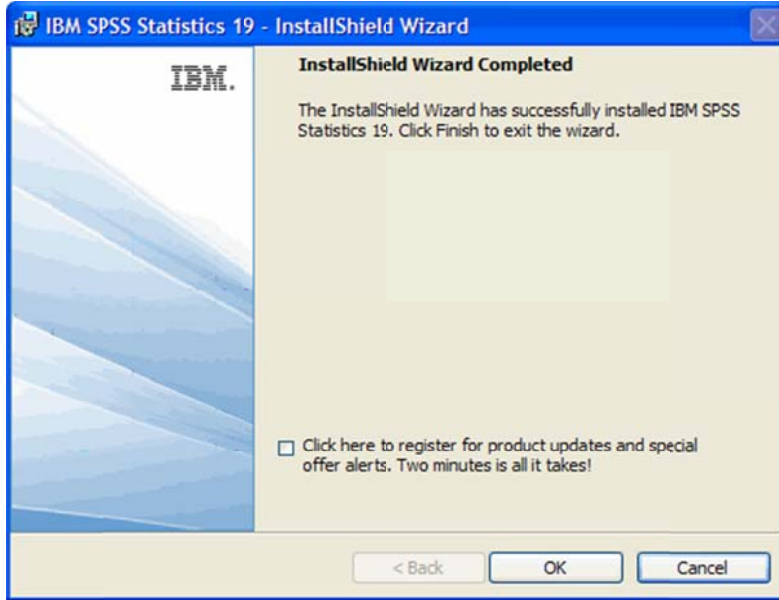
Click "**Install**" to proceed with the installation.



You will see something similar to the following while the application installs.



Installation is now complete. Uncheck the registration checkbox (optional) and click “**OK**” to finish.

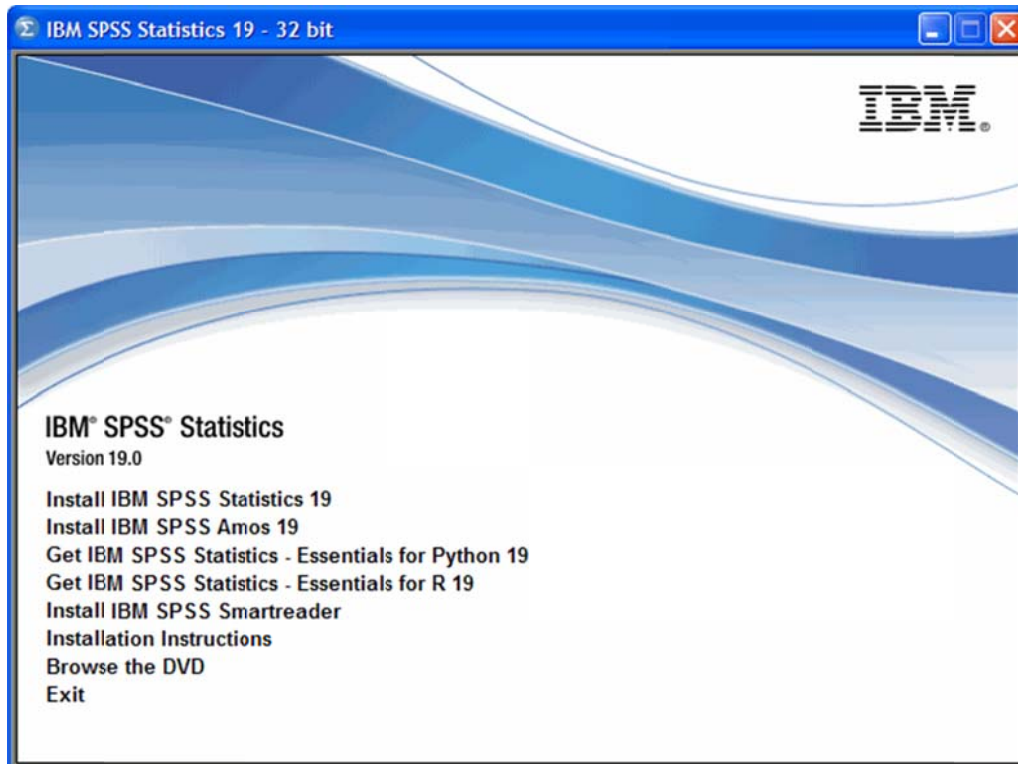


AMOS Installation Instructions

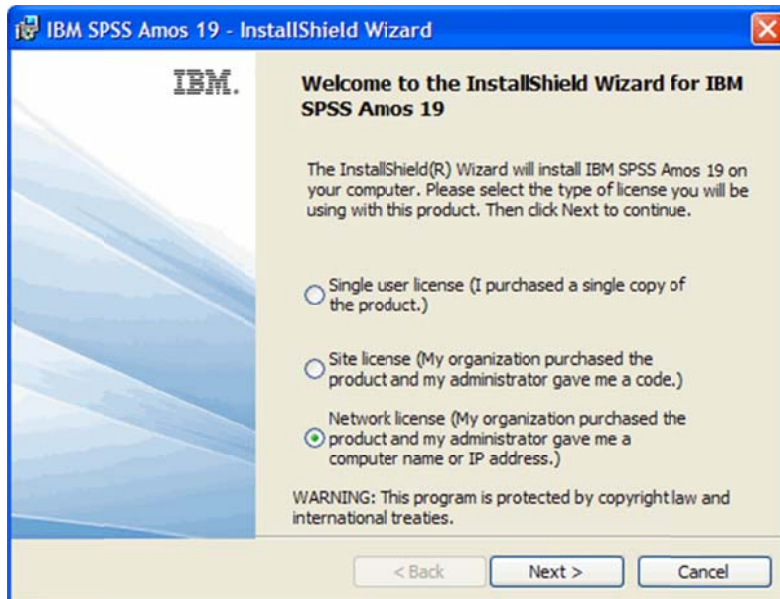
Uninstall all previous versions of AMOS before installing AMOS 19. As a precaution, ensure that any data is backed up before uninstalling software.

To install AMOS run the installation program (setup.exe) from
\\software\spss\SPSS_Statistics_19\Windows\Amos

Select "**Install AMOS 18**"



Select "**Network License**" when prompted and click "**Next**".



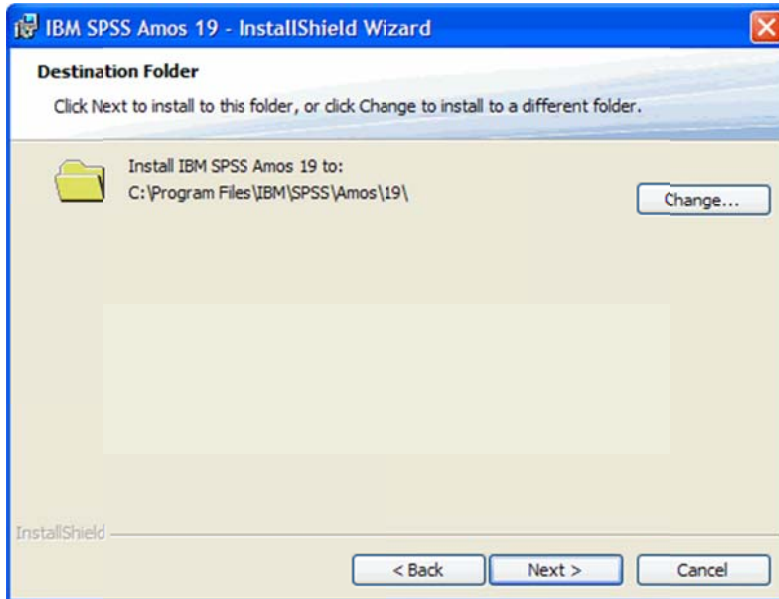
In the "**Licence Manager name or Server IP Address**" field enter the following text exactly:

spss19-lic.unisa.edu.au

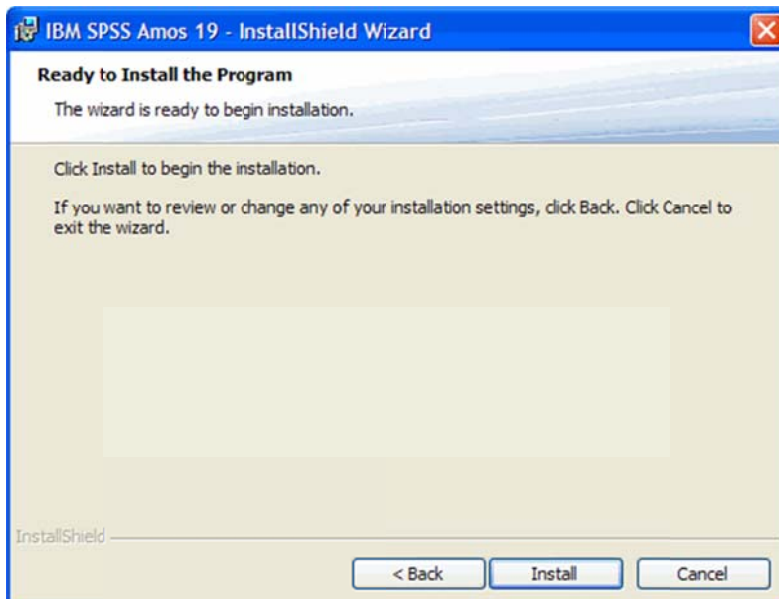
Press "**Set**" and then click "**Next**"



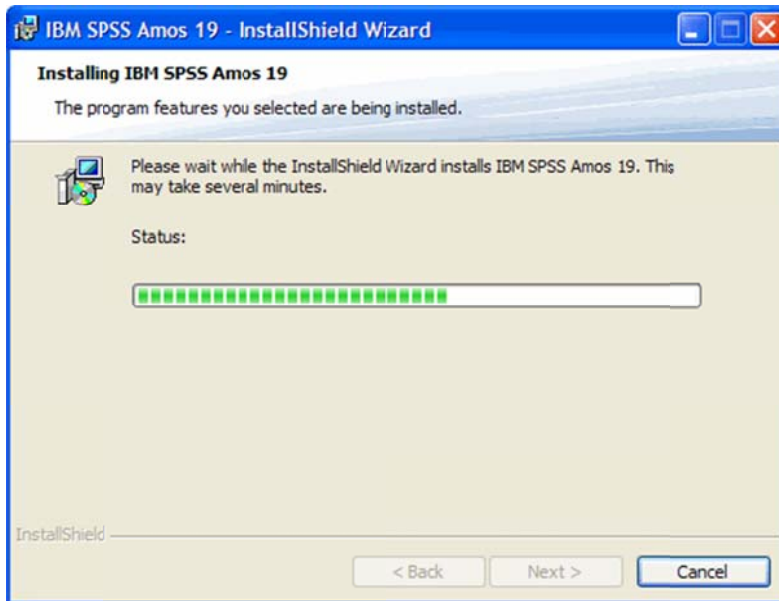
Accept or change the installation folder and click “**Next**”.



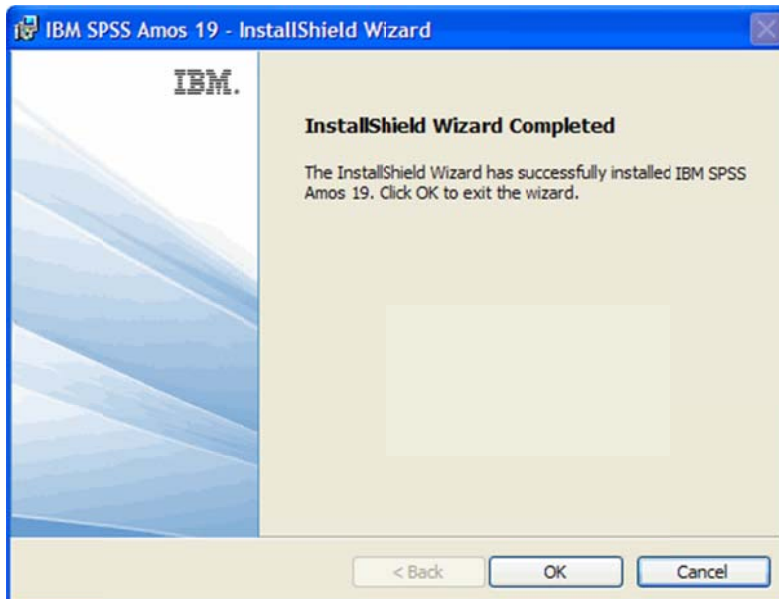
Click “**Install**” to proceed with the installation.



You will see something similar to the following while the application installs.



Installation is now complete. Click "OK" to finish.



Commuter Licence Overview

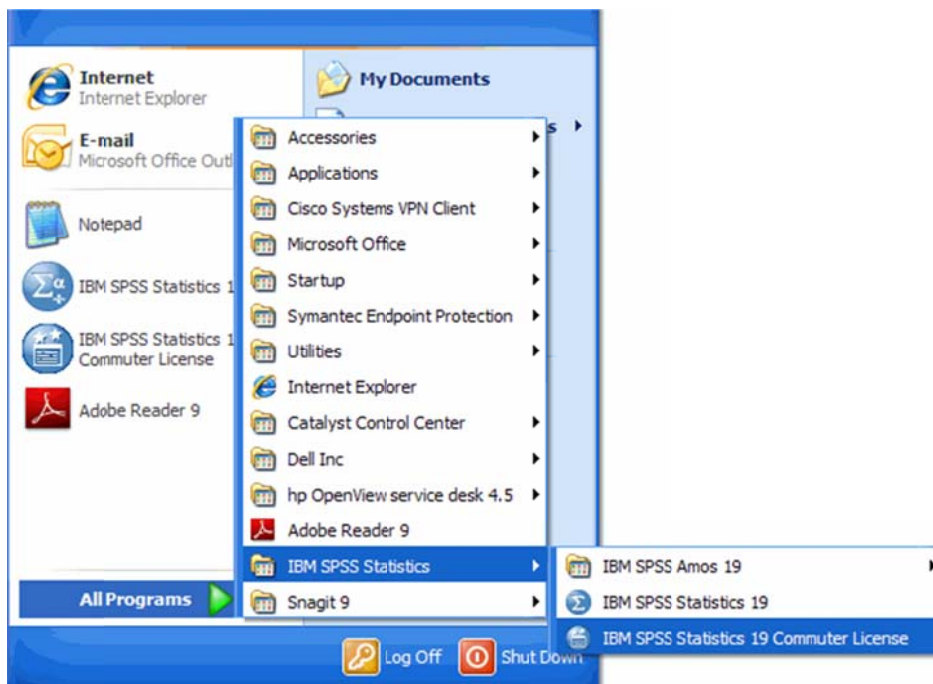
Licences for PASW and AMOS can be borrowed from the University licence management server for up to 7 days (this can be extended to 30 days). This allows you to disconnect a computer from the University network and continue to use PASW or AMOS for a specified period. If you need to borrow a Commuter Licence but are not connected to the University network then you should remotely connect to the University network (http://www.unisa.edu.au/ists/GettingConnected/staff_default.asp).

IMPORTANT: Only full time UniSA staff are permitted to use the commuter licence feature. Part time staff, casual staff and students (including Post Graduate) do not have “Work at Home” rights and are not permitted to use PASW or AMOS off campus or on a privately owned computer. For more information visit the “SPSS Work at Home software” web page:

http://www.unisa.edu.au/ists/Staff/Purchasing/Software/Licensing/WAH_SPSS.asp

SPSS Statistics Commuter Licence

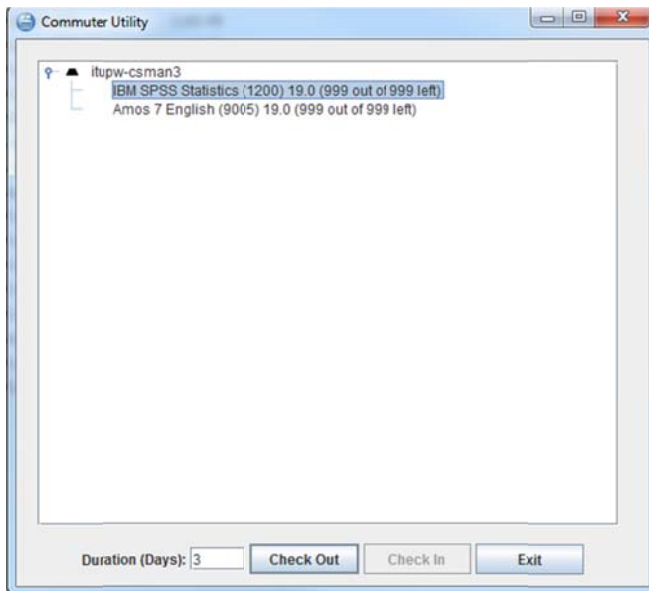
To borrow a SPSS Statistics licence click on “**Start**” > “**All Programs**” > “**IBM SPSS Statistics**” > “**IBM SPSS Statistics 19 Commuter Licence**”



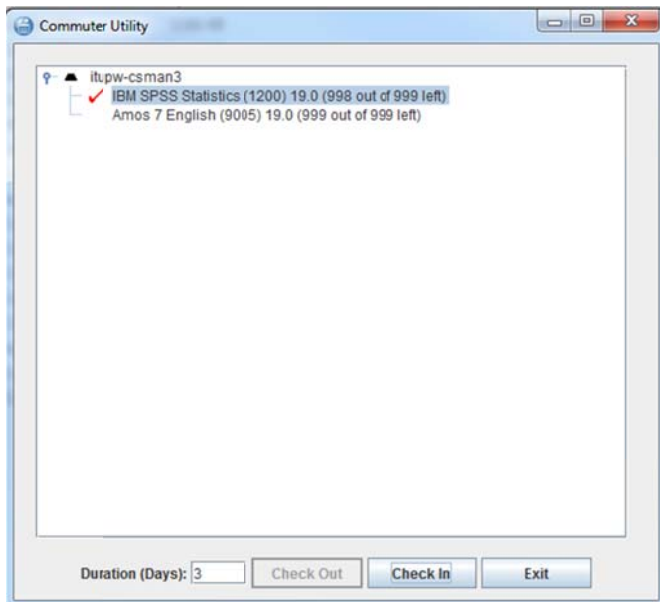
Select the licence you wish to borrow. You may need to look at all three 3 licence servers to discover which server is currently hosting the Commuter Licences you wish to borrow.

Select the number of days you wish to borrow a licence (1 to 7 days).

Click on “**Check Out**”.



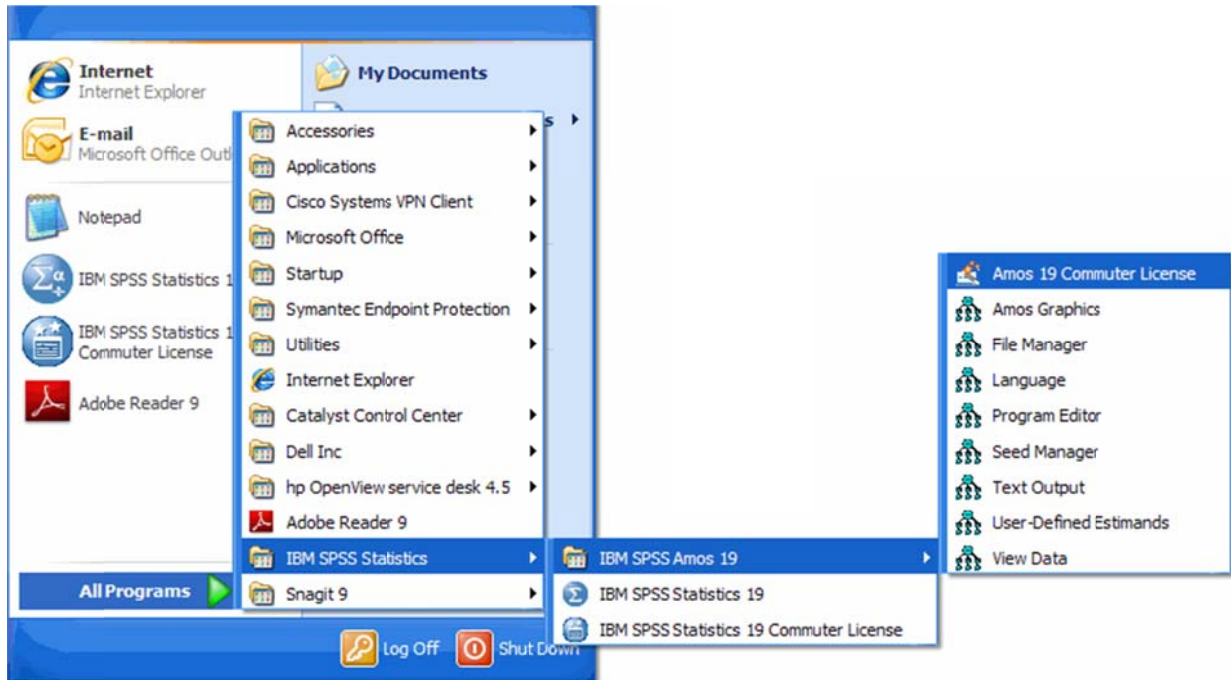
The licence has been successfully borrowed when you see ✓ next to a licence.



A licence may be returned by selecting the licence that has been borrowed (ie the licence next to ✓) and clicking on “**Check In**”. If you don't do this the licence will remain checked out until the licence duration expires.

AMOS Commuter Licence

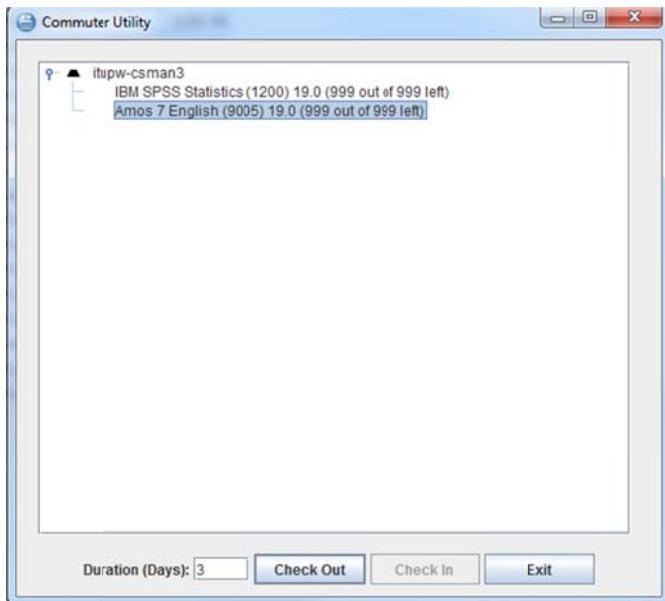
To borrow an AMOS licence click on **“Start”** > **“All Programs”** > **“IBM SPSS”** > **“IBM Amos 19”** > **“Amos 19 Commuter Licence”**



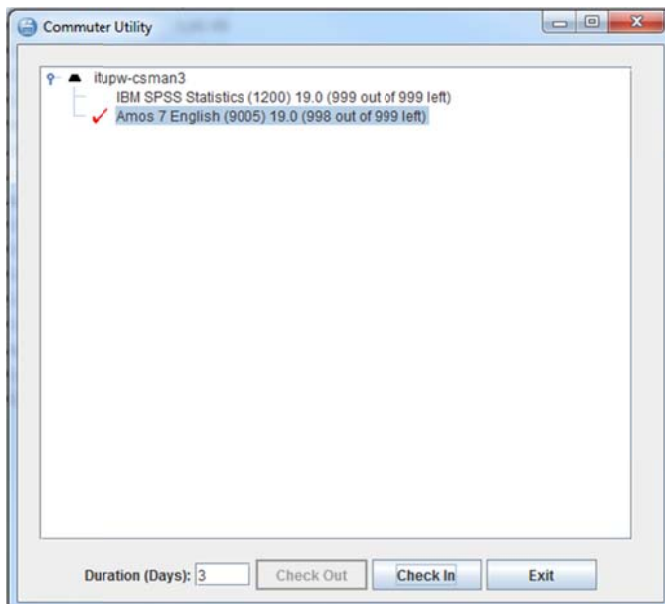
Select the licence you wish to borrow. You may need to look at all three 3 licence servers to discover which server is currently hosting the Commuter Licences you wish to borrow.

Select the number of days you wish to borrow a licence (1 to 7 days).

Click on “**Check Out**”



The licence has been successfully borrowed when you see ✓ next to a licence.

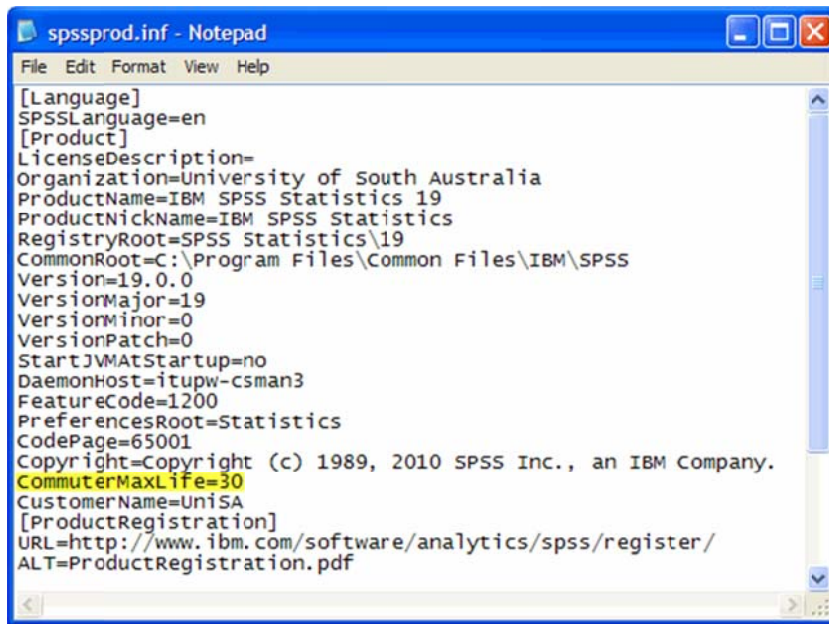


A licence may be returned by selecting the licence that has been borrowed (ie the licence next to ✓) and clicking on “**Check In**”. If you don’t do this the licence will remain checked out until the licence duration expires.

Setting the Maximum Duration for a Commuter License

By default a commuter licence can be checked out from 1 to 7 days. The maximum duration a licence can be checked out can be modified and extended to a maximum of 30 days.

The maximum length of time a user can check out a commuter license is specified by the CommuterMaxLife setting in the spssprod.inf file. This file is located in the product installation directory. Open spssprod.inf and look for CommuterMaxLife. Set the value of this option to the maximum number of days for which an end user can check out a commuter license (note: the maximum value is 30).



```
spssprod.inf - Notepad
File Edit Format View Help
[Language]
SPSSLanguage=en
[Product]
LicenseDescription=
Organization=University of South Australia
ProductName=IBM SPSS Statistics 19
ProductNickName=IBM SPSS Statistics
RegistryRoot=SPSS Statistics\19
CommonRoot=C:\Program Files\Common Files\IBM\SPSS
Version=19.0.0
VersionMajor=19
VersionMinor=0
VersionPatch=0
StartJVMAtStartup=no
DaemonHost=itupw-csman3
FeatureCode=1200
PreferencesRoot=Statistics
CodePage=65001
Copyright=Copyright (c) 1989, 2010 SPSS Inc., an IBM Company.
CommuterMaxLife=30
CustomerName=UnISA
[ProductRegistration]
URL=http://www.ibm.com/software/analytics/spss/register/
ALT=ProductRegistration.pdf
```

You can now proceed to check out a licence as described in sections “**SPSS Statistics Commuter Licence**” and “**AMOS Commuter Licence**” of this document. The “**Duration (Days)**” field in the “**Commuter Licence**” utility will now accept as a maximum the CommuterMaxLife value as specified in the spssprod.inf file.