



UniSA

School of  
Psychology,  
Social Work  
and Social  
Policy

# Field Education Information Session 11 Oct 2011

WELF 3011  
Bachelor of Social Work

## Welcome

- Field Education 1 overview
- Pre-placement planning
- Placement requirements
- Assessment
- Course information book and other documents
- Questions



# Field Education 1 overview

- seeks diversity of experience over Field Education 1 and 2 placements
- works closely with field education staff to ensure appropriateness of placement
- demonstrates required level of skill – social work Practice Standards and the ability to link theory with social work practice



# Field Education 1 overview

- 500 hours placement to be completed in SP2
- Minimum of 3 and maximum of 5 days a week
- 8 tutorials – count as placement time and one way travel
- Placement with special requirements
- On site or external supervision by qualified SW



## UniSA considerations

Aim to place students in organisations that provide an environment for substantial professional development, independence, and a broad perspective on human service work.



## Student considerations:

- personal costs (car parking, clothes, use of private car, lunch).
- location – close to home is great, but not at the expense of learning opportunities or exposure to a particular client group.
- encouraged to avoid doing placements in organisation where you have been a volunteer or a service user. The idea is to get diverse experiences.

## POSSIBLE

- Drivers licence – may be essential in some organisations.
- First Aid certificate
- Some out of hours work
- Shift work



## Pre-requisite subjects

You need to complete all first and second year courses of the Bachelor of Social Work however they may be eligible to go on placement with one course short. This one course cannot be Interviews or Intervention.

## National Police Clearance

Required by ALL students.

Copy to Kirsty by 30 November.

No further action taken re placement until it is received.



## Child Safe Environments Training

CSE training will be run between Dec-Feb 2012 Watch your e-mail for dates. Copy to Kirsty before you can start placement.

# Pre Placement Planning

- Think about what you want to do and where you want to work – on placement and in the future.
- Be prepared to discuss preferences at the initial interview.
- Start to think of yourself as a professional.
- Organise home/family/social commitments.



Pre-placement planning form sent to all students and date to be received by Kirsty was 4/10/11

✓ if completed make an appointment time with an interviewer after this information session

✗ if not completed return to Kirsty by 13/10/11

**You must have returned this form to meet with an interviewer.**



## Pre Placement Planning – stage 2 INTERVIEW

This is where you will discuss your interests, learning goals, concerns, police record if you have one and any other circumstances that need to be discussed. Please discuss paid placement or interest in interstate and rural and remote placements at this time.

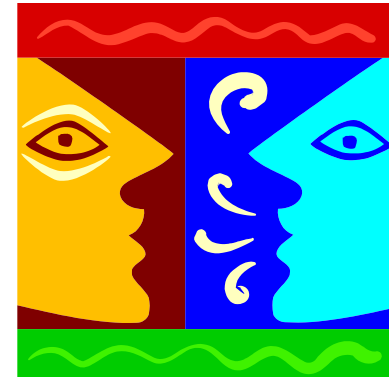


- ✓ if completed you will be able to complete the online preferences
- ✗ if not completed the process stops until you have had the interview

**You must have met with an interviewer to proceed any further**

Assist you to further clarify your

- Learning goals
- Areas of interest
- Areas not to be placed in
- Special needs
- Geographic location



# Definition of Social Work

The social work profession is committed to the pursuit of social justice, the enhancement of the quality of life and the development of the full potential of each individual, group and community in society.



AASW 2010

# Definition of Social Work

## Social workers:

1.1 work with individuals groups and communities to shape and change the conditions in which they live;

1.2 advocate for disadvantaged members of society;

1.3 work towards the elimination of social inequalities in society to facilitate a more equitable distribution of resources;

1.4 engage in research to build the social work knowledge base and understanding of society; and

1.5 analyse, challenge and develop social policies. AASW 2010



# What to expect?

**Brainstorm** different positions held by social workers/positions that use social work practice, for example:



- Child protection, social worker
- Local council, community development officer
- Community centre, coordinator

# True or False?



- You should not be expected to do dishes, photocopying or empty rubbish.
- You should read all the organisation's policies and procedures.
- You will engage 1:1 with clients.
- Gathering information for the agency is not really social work.
- Agencies undergoing change do not accept students.
- Field teachers can fail you if they do not like you.
- Administrative tasks such as; answering the telephone, taking minutes, compiling a newsletter or archiving client files is done by administrative staff, not social workers.

## Pre Placement Planning – stage 3 PREFERENCING

This is where you record online the type of placement you think will best meet your learning goals. For example, aged, your, corrections, child protection etc. You will be able to look at the range of options available

AND – location – indicate areas of preferences

**Dates for preferencing 21-25 November**



- ✓ if completed your name will go on the list for final placement matching
- ✗ if not completed the process stops until you have completed your preferences

**You must have indicated your preferences to proceed any further**

**There is only one police check that meets requirements.**

## The NATIONAL POLICE CHECK



**30 November**

- ✓ if completed you will be able to complete the online preferences
- ✗ if not completed the process stops until you have given Kirsty a copy of the police check

**You must have submitted a copy of your  
NATIONAL POLICE CHECK to proceed  
any further**



# The NATIONAL POLICE CERTIFICATE

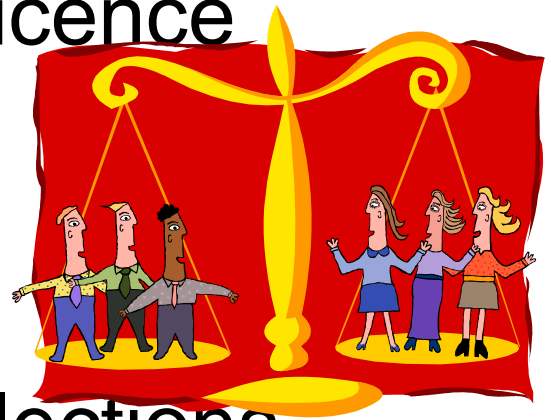
/

**30 November**



## Information used to match:

- Placement planning form
  - Access to a car/driver's licence
  - Disability Access Plan
  - Learning goals
  - Special needs
- Focus and geographical selections
- Agency needs and requirements



## Timeline

- Students matched (Dec 2011 – Mar 2012)
- Email sent to agency re prospective student
- Agency to reply their agreement to interview student
- Student emailed with advice to contact agency for an interview
- Student to inform FE team of interview date
- Student to inform FE team of interview outcome
- If the student and/or placement decide not to go ahead with this match the process goes back to the beginning



Complete child safe environment training

You must give a copy of your certificate to Kirsty.

- ✓ You're nearly there
- ✗ No certificate; no placement

**You must have submitted a copy of your child safe training to progress to the next stage**



## Complete Social Work Practice Strategies



**ENJOY  
YOUR  
PLACEMENT**

# Assessment and Course Information

Available on line and in hard copy from 2012 – email will be sent

## Assessment

- Pre-placement
- Learning contract
- Portfolio
- Tutorial participation
- Mid and post placement reports



**All aspects of assessment need to be completed and passed**

# Questions

Any questions on the information covered today?

Questions related to your personal situation  
should be discussed with **YOUR  
INTERVIEWER** at the initial interview.

